

AUSSIE GMP PUMPS BARE SHAFT CORROSION RESISTANT ... 3 YEAR PUMP WARRANTY

Aussie GMP bare shaft corrosion resistant **self-priming** centrifugal pumps are designed for long coupling to electric motors, petrol or diesel engines, hydraulic or PTO drives.

This extensive range is available in 2", 3" and 4" in a wide range of models providing excellent high pressure and high flow characteristics.

Features

- Self priming vertical lift of 6 metres
- Heavy duty cast construction
- NI AL bronze or cast 316 grade stainless steel
- Replaceable suction port
- Carbon Alumina mechanical seal standard on transfer pumps, silicon carbide seals on semi trash pumps
- All pumps pedestal mounted
- Drive shafts available in high grade steel or stainless steel configurations

The pumps offer flows to 2100 litres per minute and heads 31 metres. Pumps will self-prime from 6 metres and are available in a range of construction materials including Ni Al bronze and cast 316 stainless steel.

Cast iron bare shaft pumps also available, see separate spec sheet.

Benefits

- » Ready to pump in minimum amount of time
- » Longevity and durability
- » Bronze suits marine applications, stainless steel is resistant to abrasion
- » Easy to change if thread damaged, easy access to check valve
- » Flexibility of handled liquids
- » Makes installation simple
- » Applicable to specific models



B3XR-A/SS bare shaft

Applications:

NiAl bronze

- Deck wash down
- Marine air conditioning
- Bilge pump out
- Fire fighting
- Salvage

Cast 316 Stainless steel

- Tailing dam pump out
- Sewage handling
- Aggressive water pumping
- Acid & solvent pumping
- Industrial food waste
- Agricultural chemical transfer



Specifications

Port size (in/out)	Model	CAT no.	Req'd kW	RPM	PSI	Total Head (m)	Capacity (l/m)
NIAL bronze - Marine Grade ... stainless steel plugs & fasteners							
2" x 2"	B2KQ-A/B W	AS68	1.5	2900	25	18	400
3" x 3"	B3KQ-A/B W	AS69	2.2	2900	20	14.5	850
4" x 4"	B4KQ-A/B W	ASC6	4	2900	20	14.5	1650
3" x 3"	B3XR-A/B W	ASC3	7.5	2900	43	31	1500
4" x 4"	B4XR-A/B W	ASC5/ASDN	15	2900	43	31	2100
2" x 2"	G2TMK-A/B W	ASB9	3	2900	43	31	400

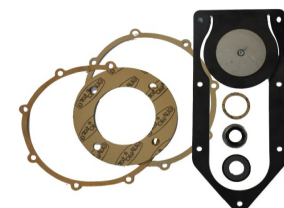
Stainless Steel - 316 Grade for corrosive applications

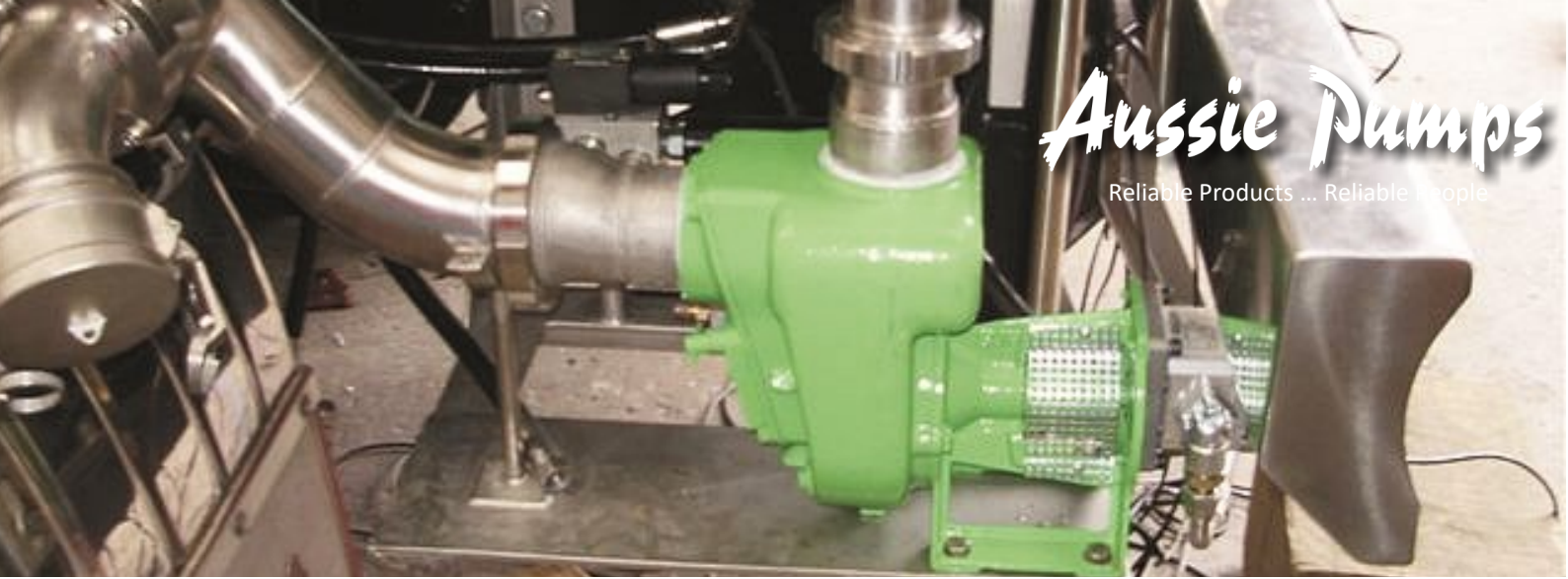
2" x 2"	B2KQ-A/SS W	ASL1	1.5	2900	28	20	440
3" x 3"	B3XR-A/SS W	ASD1	7.5	2900	43	31	1500
4" x 4"	B4XR-A/SS W	ASDS	15	2900	43	31	2100

Due to our program of continuous product development the manufacturer reserves the right to alter specifications without notice.

Rejuvenation kits...

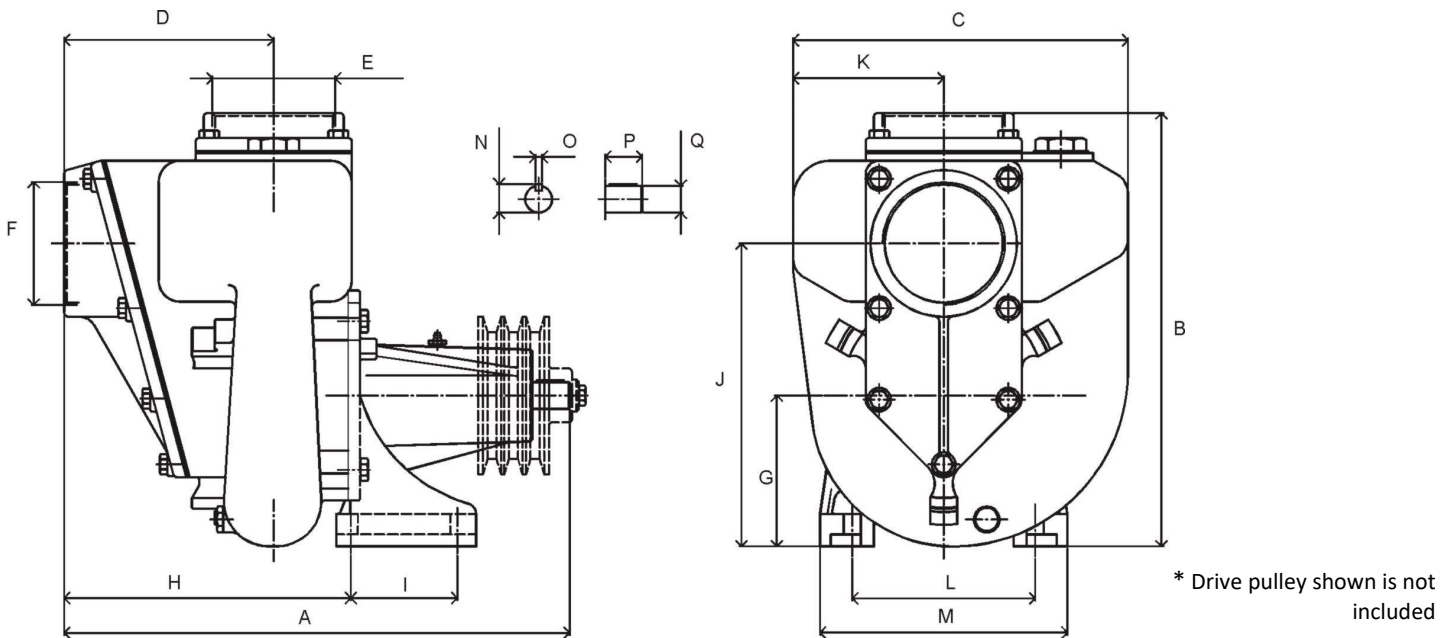
Contain gaskets, mech seal, counterface & complete check valve to make servicing these pumps a breeze.





AUSSIE GMP PUMPS BARE SHAFT CORROSION RESISTANT ... 3 YEAR PUMP WARRANTY

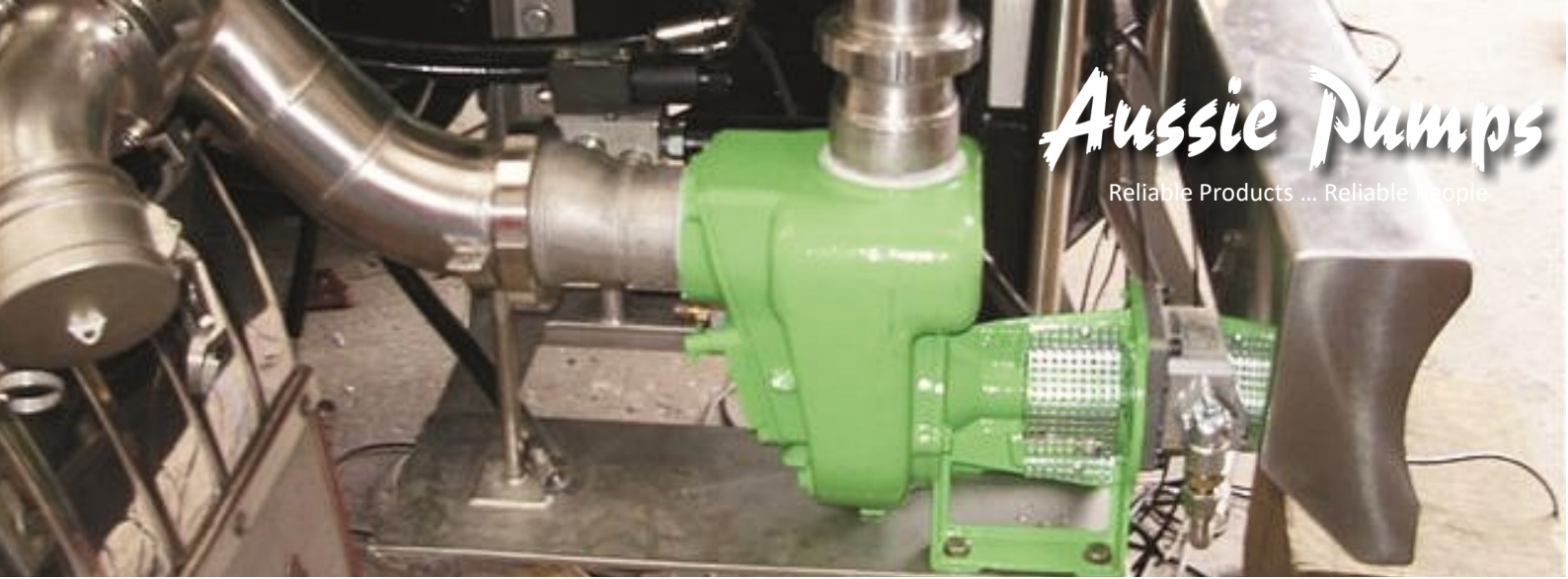
Dimensions:



Model	A (mm)	B (mm)	C (mm)	D (mm)	E	F	G (mm)	H (mm)	I (mm)	J (mm)	K (mm)	L (mm)	M (mm)	N (mm)	O (mm)	P (mm)	Q (mm)
B2KQ-A	266	295	184	120	2"	2"	106	180	-	231	87	170	132	17.37	4	36	15.87
B3KQ-A	300	294	185	147	3"	3"	106	215		227	87	170	132	17.37	4	36	15.87
B3XR-A	435	400	280	175	3"	3"	140	232	105	315	136	230	170	26.5	6	34.5	25
B4KQ-A	470	405	315	195	4"	4"	140	265	105	285	140	230	170	26.5	6	34.5	25
B4XR-A	505	450	365	196	4"	4"	154		75		181	230	182	26.5	6	34.5	25
G2TMK-A	370	345	230	122	2"	2"	140	192	75	265	106	182	235	26.5	6	34.5	25

Optional Accessories:

- Heavy duty galvanised steel base
- Medium pressure lay flat delivery hose, working pressure 100 psi
- Carbon ceramic, silicon carbide, tungsten carbide or Viton seals available

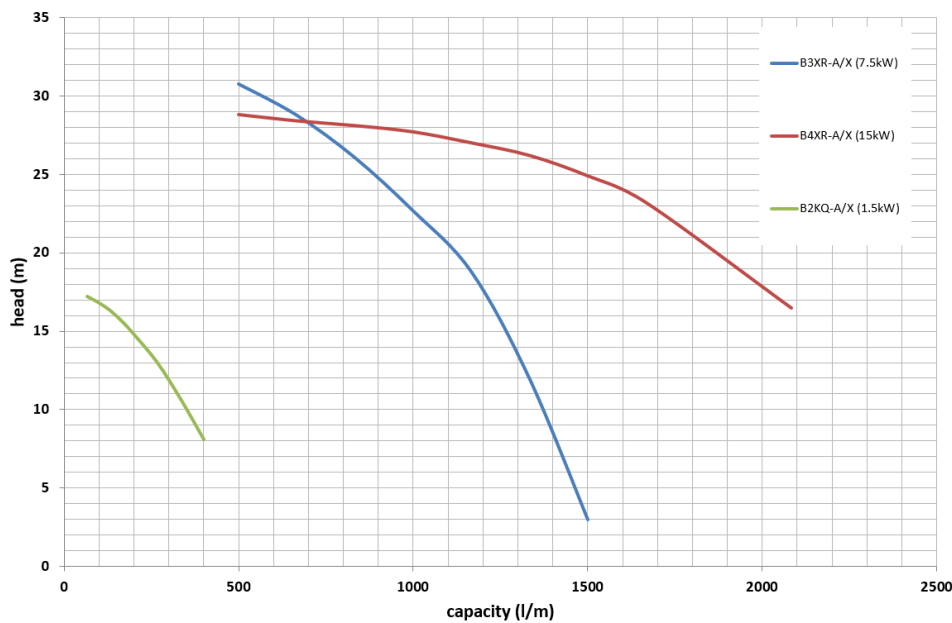
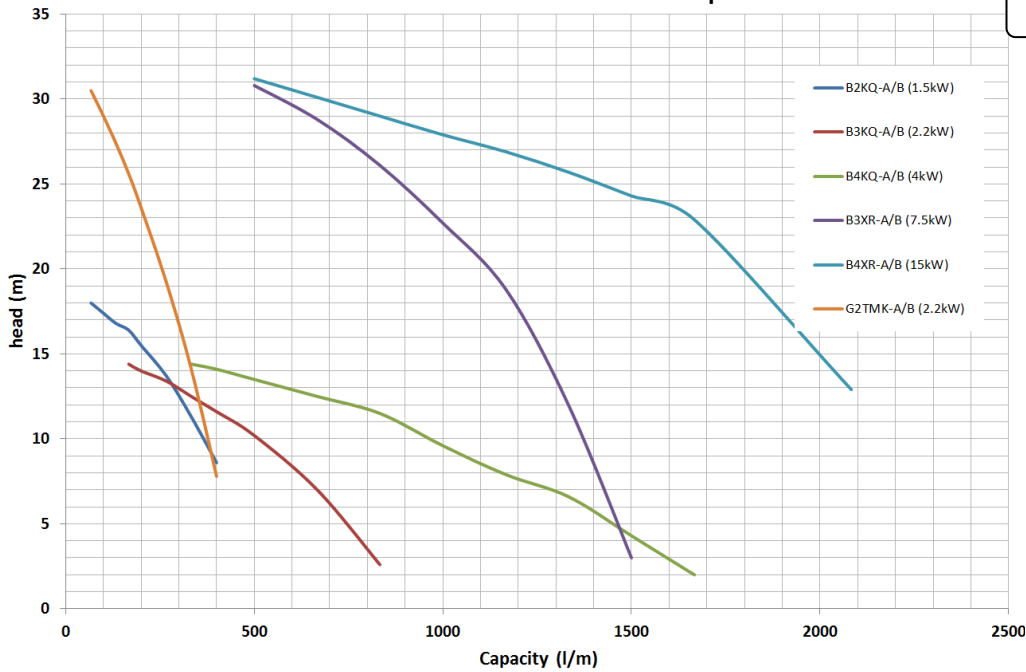


AUSSIE GMP PUMPS BARE SHAFT CORROSION RESISTANT ... 3 YEAR PUMP WARRANTY

Performance Curves:

2900 rpm

Bronze bare shaft



Stainless steel bare shaft

Due to our program of continuous product development the manufacturer reserves the right to alter specifications without notice.