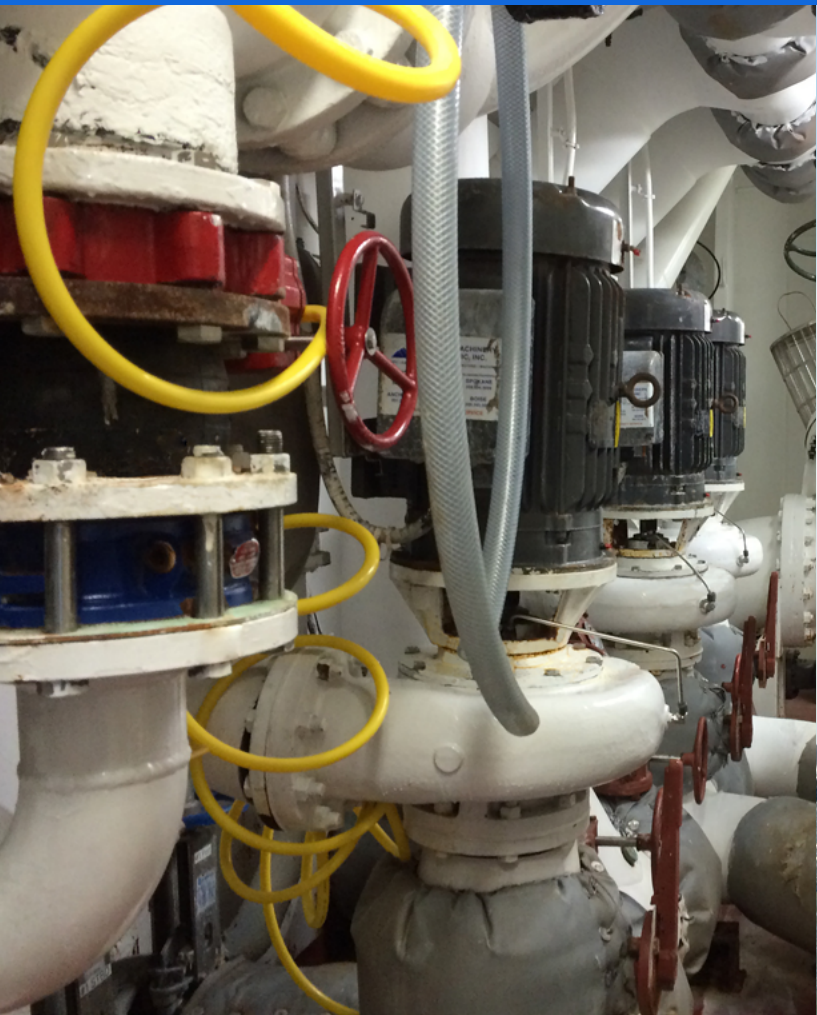




**CARVER PUMP™**

Built for purpose



**MARINE**



# MARINE

Fishing boats to cruise ships. Navy and Coast Guard cutters to cargo vessels. Whatever your needs, we have the right pump for your application.

For over 60 years, Carver Pump has proudly served commercial and military marine customers. Our pumps provide mission-critical services for Navy destroyers and Alaskan fishing vessels alike.

With pumps ranging up to 5,000 GPM and heads up to 3,400 feet, our broad portfolio covers most every shipboard service including, those for freshwater, seawater, fuel, oil, sewage, and other common fluids.

We are one of the only pump companies in the United States to build pumps in accordance with ASTM F998, USCG, and American Bureau

of Shipping (ABS) requirements that meet commercial marine standards. Certifications from various technical societies such as ABS, Det Norske Veritas (DNV-GL) and Lloyd's are also available.

The ocean is no place to find out your pump does not make the grade. Trust your shipboard services to Carver Pump; the industry leader in shipboard centrifugal pumps.

## GH SERIES VERSATILITY:

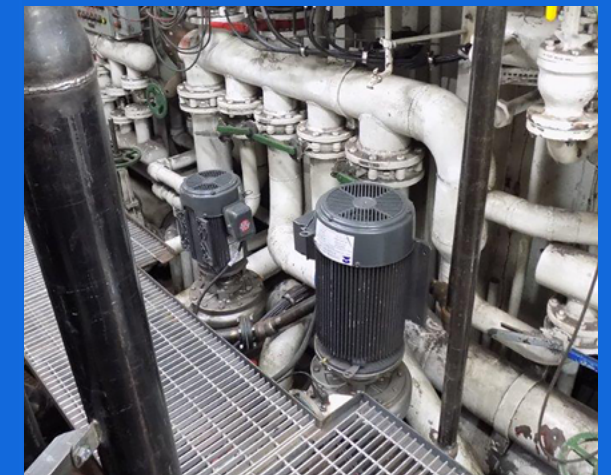
### Front Cover Photo

Vertically-mounted GH pumps onboard one of the many crab fishing boats in the deadly seas of the Pacific Northwest.

The pumps pictured pump "live" seawater into the holding tanks to keep the catch alive and well.

The small footprint of our close-coupled option, the various standard materials available, and the rugged design make the GH Series a great option for seaboard applications.

The captains and crews trust Carver's stainless steel GH Series pumps to keep their catches alive and their ships at sea. Vertically-mounted for this application and close-coupled to save space, these pumps quietly do their job below deck 24 hours a day.



### Above Photo

A system designed for repowering a processing ship.



### GH - HORIZONTAL END-SUCTION PUMP

Flow to 2,500 GPM

Head to 520 ft. TDH

Close-coupled or frame-mounted

Fully compatible with standard, off-the-shelf NEMA JP frame motors



### MAXUM - VERTICAL INLINE (OH3)

Flows to 2,400 GPM

Head to 720 ft. TDH

Temperatures to 600° F (315° C) without cooling water

Configurable to full API 610 compliance



### RSV - INLINE MULTISTAGE PUMP

Flow to 400 GPM

Head to 830 ft. TDH

Standard NEMA motor sizes fitted with no modifications

Modular construction



### KEF - SELF-PRIMING PROCESS PUMP

Flow to 750 GPM

Head to 130 ft. TDH

Close-coupled or frame-mounted

Designed for fluids with entrained solids and fibrous materials up to 1.0" in diameter

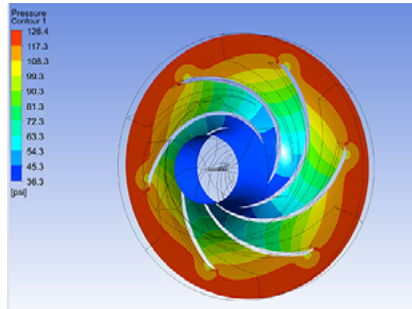
## ENGINEERED FOR PERFORMANCE

If you require special flows, pressures, temperatures, mounting, or drive configurations, we can create a pump specifically for you. We specialize in developing custom solutions for our customers. Our advanced design tools include cutting-edge solid modeling software, and powerful computer systems for analyzing and optimizing fluid flow. The exceptional hydraulic design capabilities

address the most challenging performance requirements.

We routinely develop new products for very specific applications.

Many of our standard products can be highly customized for specific applications such as bilge/ ballast and chilled water applications. Our approach

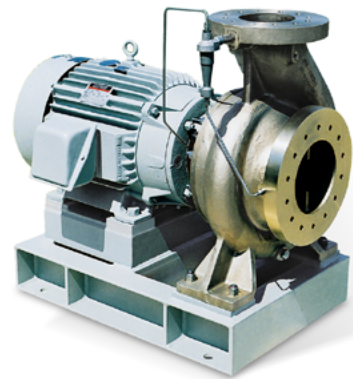


is to integrate the pump design with the system to create as much value for our customers as possible.

Our engineers are available to help your next pump project excel. Whether it's improved efficiency, reduced horsepower, challenging suction performance or extreme environmental conditions, we will find the best solution to meet your goals for reliability and performance, with the quality and price you need.



Most importantly, as with all our other pumps, these pumps offer the reliability, low lifetime cost and lasting value that has made Carver one of the most trusted names in pumps.



**M SERIES (F998) - MARINE PUMP**



**SND - LOW NPSH 2-STAGE VERTICAL PUMP**

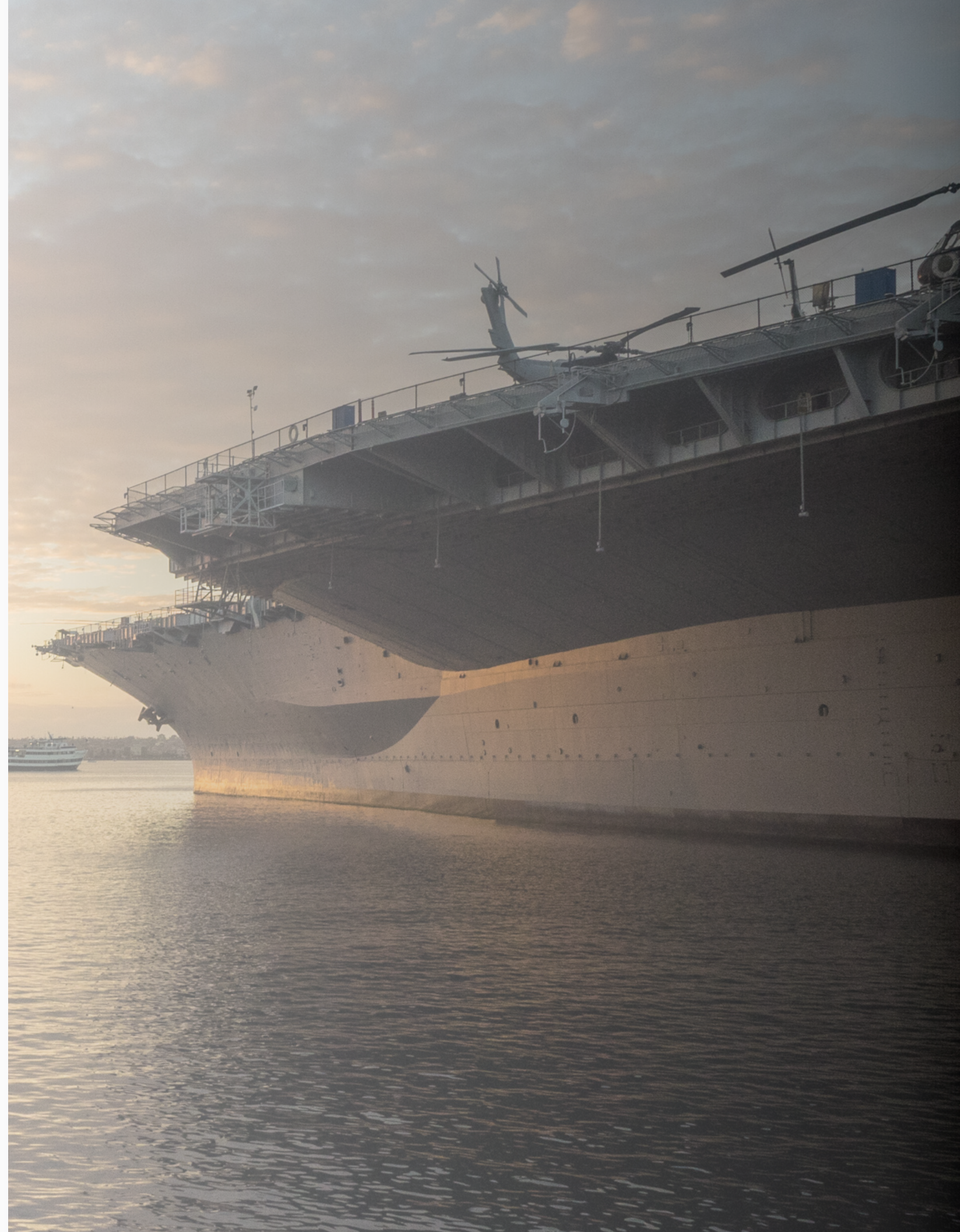
To learn more about our pumps, please ask your sales representative or email [sales@carverpump.com](mailto:sales@carverpump.com).



Approval Certification Number 95-370



European Community Certificate





## 80 years of experience

Since we built our first pumps, Carver Pump has become recognized as one of the leading centrifugal pump companies, building to the most demanding engineering specifications and military standards in the world.

We were one of the first American pump companies to attain ISO 9001 certification – the most recognized standard for quality in the world. This certification is your assurance that our commitment

to quality includes not only our hardware, but also superior customer service, leading-edge R&D, and continuous improvement in everything we do.

So whether the job is refueling fighter jets on the deck of an aircraft carrier, supplying paint to an auto assembly line, or bringing water to the fountain in a city park, we put our reputation on the line everyday with every pump we build.

## Contact us

2415 Park Avenue  
Muscatine, Iowa 52761-5691  
USA

(563) 263-3410  
sales@carverpump.com  
www.carverpump.com

Australian Distributor:  
**Australian Pump Industries**  
**02 8865 3500**  
carver@aussiepumps.com.au