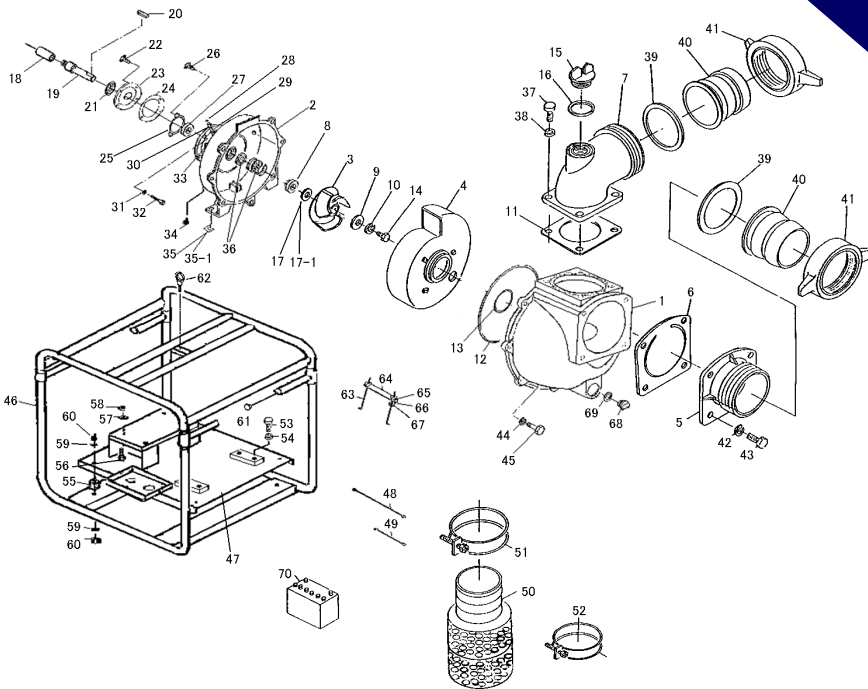


Renew or upgrade

your pump with an
Aussie Wet End Kit

Only \$6,813

(p/n: QP602HKIT)



Purchase a kit and **SAVE up to 26%**
on buying individual parts

Rejuvenation Kit

Part number	Description	Positions	List Price
Q602REJ-2	Rejuvenation Kit	11, 12, 13, 16, 17, 36, 69	\$662

Position	Part number	Description	Qty	List price
1	Q1611-060010-0001	CASING	1	\$3,050
2	Q1611-060020-0001	MOUNTING FLANGE	1	\$2,738
3	Q1608-000030	IMPELLER	1	\$312
4	Q1601-000130	VOLUTE CASING	1	\$552
5	Q4601-000160-0001	SUCTION COVER	1	\$411
6	Q1601-350350	CHECK VALVE	1	\$421
7	Q1605-000090-0001	DELIVERY ELBOW	1	\$903
8	Q1611-220750	MECHANICAL SEAL SPACER	1	\$0
9	Q1412-201240-0011	IMPELLER WASHER	1	\$10
10	Q045125-0100	SPRING WASHER	1	\$1
11	Q1601-330360	DELIVERY ELBOW PACKING	1	\$59
12	Q048157-3750	CASING O-RING	1	\$69
13	Q048220-1200	O-RING	1	\$23
14	Q010505-1030	BOLT	1	\$0
15	Q063121-1202-0002	FLOODING CAP	1	\$116
16	Q074132-0503	FLOODING CAP PACKING	1	\$6
17	Q085283-4230	ADJUST LINER	1	\$9
17-1	Q085285-4230	ADJUST LINER	1	\$9
18	Q1473-221020	EXTENSION SHAFT	1	\$704
19	Q1611-221010	PUMP SHAFT	1	\$704
20	Q051107-0735	KEY	1	\$26
21	Q086235-4808	OIL SEAL	1	
22	Q013119-0515	CAP SCREW	4	
23	Q1473-130760	OIL ROOM COVER	1	
24	Q1473-390780	OIL ROOM COVER PACKING	1	
25	Q1473-201320	BEARING SET PLATE	1	
26	Q013119-0515	CAP SCREW	3	
27	Q067000-6207	BALL BEARING	1	
28	Q1473-807150	OIL CAP	1	
29	QE12003-8100	LONG NIPPLE	1	
30	Q077225-3838	SOCKET	1	
31	Q045125-0100	SPRING WASHER	4	
32	Q019116-0632	BOLT	4	
33	Q1473-809373	OIL GAUGE	1	
34	Q1473-807160	OIL PLUG	1	
35	Q085283-0000	BASE LINER	1	
35-1	Q085285-0000	BASE LINER	1	
36	Q080540-4235	MECHANICAL SEAL	1	\$550

Position	Part number	Description	Qty	List price
37	Q010505-1640	BOLT	4	
38	Q045125-0160	SPRING WASHER	4	
39,40,41	QCOUPLING6"	HOSE COUPLING ASSEMBLY	2	\$207
42	Q045125-0160	SPRING WASHER	4	
43	Q010505-1645	BOLT	4	
44	Q045125-0120	SPRING WASHER	7	
45	Q010505-1235	BOLT	7	
46	Q2633-214010-0004	FRAME	1	\$910
47	Q1613-214020-0004	ENGINE BASE	1	\$780
48	Q097220-9090	CORD (L)	1	\$182
49	Q097220-9030	CORD (S)	1	\$106
50	QSTRAINER6"	STRAINER	1	\$532
51	Q093225-6000	WIRE HOSE BAND	2	\$32
52	Q093225-0160	WIRE HOSE BAND	1	
53	Q010505-1235	BOLT	4	
54	Q045125-0120	SPRING WASHER	4	
55	Q072330-2546	CUSHION RUBBER	4	
56	Q010505-1060	BOLT	4	
57	Q045125-0100	SPRING WASHER	4	
58	Q020545-0100	NUT	4	
59	Q045125-0100	SPRING WASHER	8	
60	Q020545-0100	NUT	8	
61	Q1412-317030	CAP	4	
62	Q017105-1627	EYE BOLT	1	
63	Q095021-1170A	BATTERY SET KIT	2	
64	Q095021-1170-0014	BATTERY SET PLATE	1	
65	Q045125-0060	SPRING WASHER	2	
66	Q040145-0060	WASHER	2	
67	Q020545-0060	NUT	2	
68	Q063121-1100ASS	DRAIN CAP WITH O-RING	1	\$21
69	Q048035-0300	O-RING (DRAIN CAP)	1	\$6
70	QBATTERY	BATTERY FOR ELECTRIC START	1	\$167

FIVE YEAR WARRANTY ON ALL AUSSIE QP PUMPS

... subject to the use of genuine Aussie replacement parts.

RELIABLE PRODUCTS ... RELIABLE PEOPLE



Aussie Pumps

AUSSIE SPARES DIAGRAM & PARTS LIST

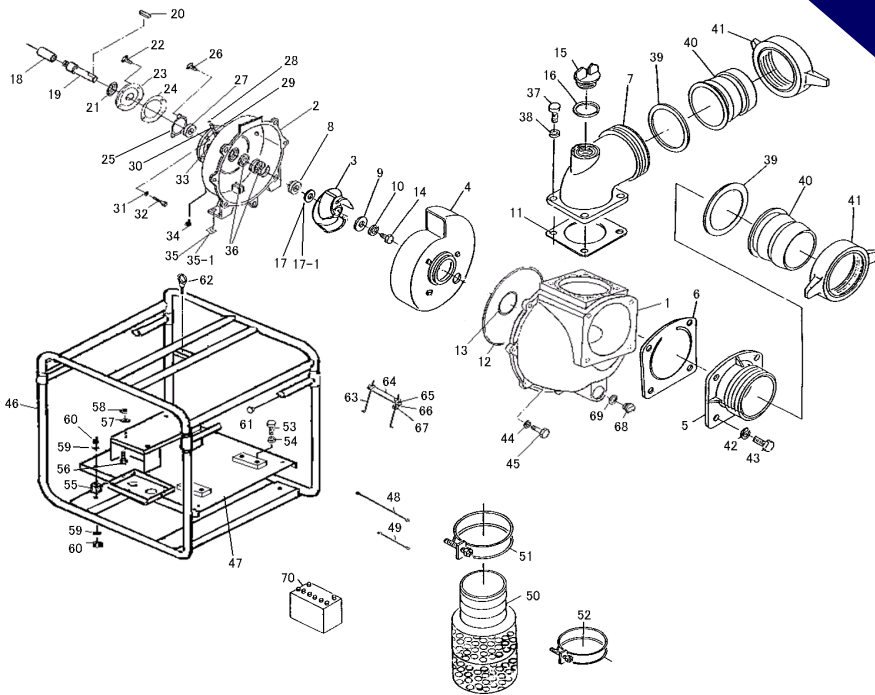
AUSSIE QP TRANSFER PUMPS: QP602/L100E

Renew or upgrade

your pump with an
Aussie Wet End Kit

Only \$6,813

(p/n: QP602DKIT)



Purchase a kit and **SAVE up to 26%**
on buying individual parts

Position	Part number	Description	Qty	List price
1	Q1611-060010-0001	CASING	1	\$3,050
2	Q1611-060020-0001	MOUNTING FLANGE	1	\$2,738
3	Q2639-000030	IMPELLER	1	\$312
4	Q1601-000130	VOLUTE CASING	1	\$552
5	Q4601-000160-0001	SUCTION COVER	1	\$411
6	Q1601-350350	CHECK VALVE	1	\$421
7	Q1605-000090-0001	DELIVERY ELBOW	1	\$903
8	Q1611-220750	MECHANICAL SEAL SPACER	1	
9	Q1412-201240-0011	IMPELLER WASHER	1	\$10
10	Q045125-0100	SPRING WASHER	1	\$1
11	Q1601-330360	DELIVERY ELBOW PACKING	1	\$59
12	Q048157-3750	CASING O-RING	1	\$69
13	Q048220-1200	O-RING	1	\$23
14	Q010505-1030	BOLT	1	
15	Q063121-1202-0002	FLOODING CAP	1	\$116
16	Q074132-0503	FLOODING CAP PACKING	1	\$6
17	Q085283-4230	ADJUST LINER	1	\$9
17-1	Q085285-4230	ADJUST LINER	1	\$9
18	Q1473-221020	EXTENSION SHAFT	1	\$704
19	Q1611-221010	PUMP SHAFT	1	\$704
20	Q051107-0735	KEY	1	\$26
21	Q086235-4808	OIL SEAL	1	
22	Q013119-0515	CAP SCREW	4	
23	Q1473-130760	OIL ROOM COVER	1	
24	Q1473-390780	OIL ROOM COVER PACKING	1	
25	Q1473-201320	BEARING SET PLATE	1	
26	Q013119-0515	CAP SCREW	3	
27	Q067000-6207	BALL BEARING	1	
28	Q1473-807150	OIL CAP	1	
29	QE12003-8100	LONG NIPPLE	1	
30	Q077225-3838	SOCKET	1	
31	Q040145-0080	SPRING WASHER	4	
32	Q010605-0830	BOLT	4	
33	Q1473-809373	OIL GAUGE	1	
34	Q1473-807160	OIL PLUG	1	
35	Q085283-0000	BASE LINER	1	
35-1	Q085285-0000	BASE LINER	1	
36	Q080540-4235	MECHANICAL SEAL	1	\$550

Rejuvenation Kit

Part number	Description	Positions	List Price
Q602REJ -2	Rejuvenation Kit	11, 12, 13, 16, 17, 36, 69	\$662

Position	Part number	Description	Qty	List price
37	Q010505-1640	BOLT	4	
38	Q045125-0160	SPRING WASHER	4	
39,40,41	QCOUPLING6"	HOSE COUPLING ASSEMBLY	2	\$207
42	Q045125-0160	SPRING WASHER	4	
43	Q010505-1645	BOLT	4	
44	Q045125-0120	SPRING WASHER	7	
45	Q010505-1235	BOLT	7	
46	Q2640-184010	FRAME	1	\$910
47	Q2639-214020-0004	ENGINE BASE	1	\$780
48	Q097209-9900	CORD (L)	1	\$182
49	Q097209-9300	CORD (S)	1	\$106
50	QSTRAINER6"	STRAINER	1	\$532
51	Q093225-6000	WIRE HOSE BAND	2	\$32
52	Q093225-0160	WIRE HOSE BAND	1	
53	Q010505-1235	BOLT	4	
54	Q045125-0120	SPRING WASHER	4	
55	Q072330-2546	CUSHION RUBBER	4	
56	Q010505-1060	BOLT	4	
57	Q045125-0100	SPRING WASHER	4	
58	Q020545-0100	NUT	4	
59	Q045125-0100	SPRING WASHER	8	
60	Q020545-0100	NUT	8	
61	Q1412-317030	CAP	4	
62	Q017105-1627	EYE BOLT	1	
63	Q095021-1170A	BATTERY SET KIT	2	
64	Q095021-1170-0014	BATTERY SET PLATE	1	
65	Q045125-0060	SPRING WASHER	2	
66	Q040145-0060	WASHER	2	
67	Q020545-0060	NUT	2	
68	Q063121-1100ASS	DRAIN CAP WITH O-RING	1	\$21
69	Q048035-0300	O-RING (DRAIN CAP)	1	\$6
70	QBATTERY	BATTERY FOR ELECTRIC START	1	\$167

FIVE YEAR WARRANTY ON ALL AUSSIE QP PUMPS

... subject to the use of genuine Aussie replacement parts.

RELIABLE PRODUCTS ... RELIABLE PEOPLE



Quality ISO 9001

SAI GLOBAL