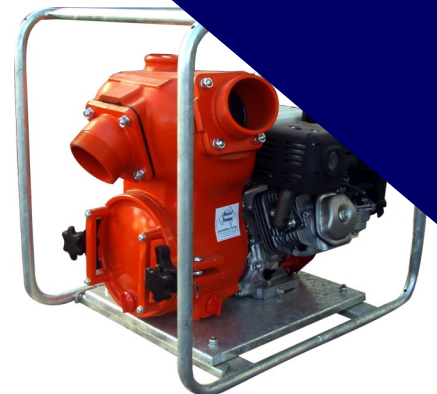
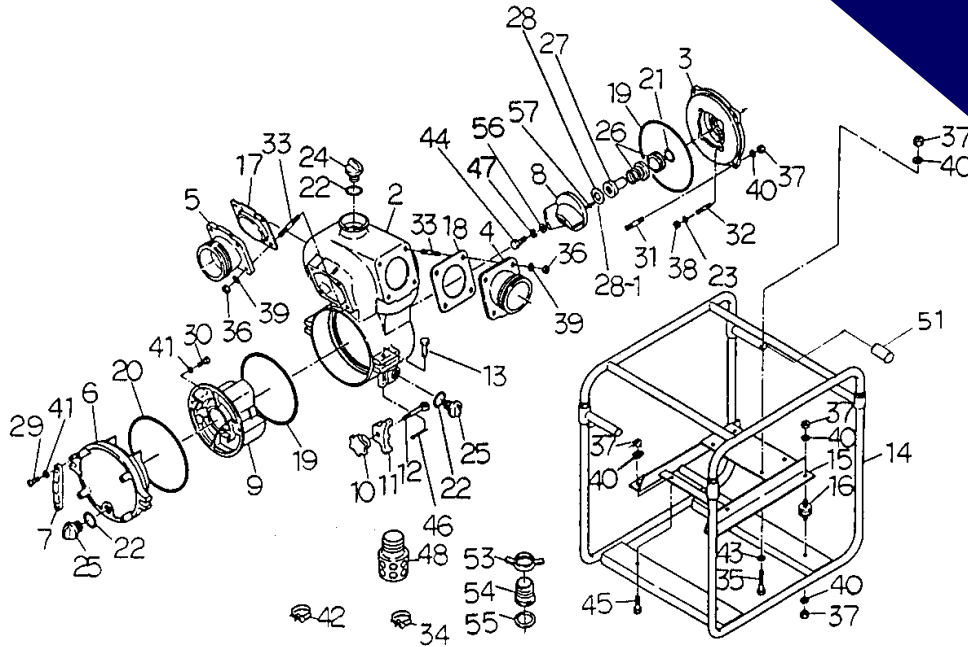


RENEW OR UPGRADE

YOUR PUMP WITH AN AUSSIE WET END KIT

ONLY **\$2,624**

P/N: QP40TKITN/F ... 1" KEYED HONDA
QP40TKITNF/L100 ... 1" KEYED YANMAR



Position	Part number	Description	Qty	List price
2	Q1412-060010	CASING	1	\$3,189
3	Q1418-060021	MOUNTING FLANGE GX390	1	\$757
3	Q2464-060020	MOUNTING FLANGE L100	1	\$757
4	Q1415-000090	DELIVERY COVER	1	\$504
5	Q1415-000090	SUCTION COVER	1	\$504
6	Q7305-100170	DRAIN COVER	1	\$534
7	Q1247-100250	DRAIN COVER HANDLE	2	\$45
8	Q1418-000030	IMPELLER (GX270 or GX390)	1	\$482
8	Q2464-000030	IMPELLER (L100)	1	\$482
9	Q1412-000130	VOLUTE CASING	1	\$460
10	Q1247-000190	DRAIN COVER SET HANDLE	2	\$42
11	Q1247-000200	DRAIN COVER PUSH PLATE	2	\$42
12	Q1247-200270	HINGE BOLT	2	\$54
13	Q1247-220280	HINGE PIN	2	\$8
14	Q1418-214010	FRAME	1	\$574
15	Q1437-214020	ENGINE BASE	1	\$365
16	Q072330-2546	CUSHION RUBBER (GX270 & GX390)	4	\$75
16	Q072330-3032	CUSHION RUBBER (L100)	4	\$75
17	Q1401-350350	CHECK VALVE	1	\$102
18	Q1401-330360	DELIVERY COVER PACKING	1	\$32
19	Q048931-2300	O-RING	2	\$45
20	Q048935-2400	O-RING	1	\$45
21	Q048220-0240	O-RING	1	\$9
22	Q048035-0300	O-RING	3	\$6
23	Q045822-0080	SEAL WASHER	4	\$1
24	Q063121-1100ASS	FLOODING CAP	1	\$21
25	Q063121-1100ASS	DRAIN CAP	2	\$21
26a	Q0807344-3530	MECHANICAL SEAL GX390 (SILICON CARBIDE) (only avail in rejuvenation kit)	1	-
26b	Q080144-3530	MECHANICAL SEAL L100 (SILICON CARBIDE) (only avail in rejuvenation kit)	1	-
27	Q081188-3034	MECH SEAL SLEEVE (GX270 & GX390)	1	\$268
27	Q081188-3050	MECH SEAL SLEEVE (L100)	1	\$268
28	Q085283-4525	ADJUST LINER	1	\$9
28-1	Q085285-4525	ADJUST LINER	1	\$9
29	Q014105-0825	SCREW	4	\$1
30	Q014109-0825	SCREW	2	\$6
31	Q015115-1025	Bolt M8/25 Dome head	4	\$3

Purchase a kit and **SAVE** up to **40%**
on buying individual parts

Replacement Kits

Part number	Description	Positions	List Price
Q40T-ORKT	O ring Kit	18, 19, 20, 21, 22	\$62
Q40TREJ-2	Rejuvenation Kit (GX390)	18, 19, 20, 21, 22, 26a, 28	\$506
Q40TDREJ-2	Rejuvenation Kit (L100)	18, 19, 20, 21, 22, 26b, 28	\$506

Position	Part number	Description	Qty	List price
32	Q015114-0536	STUD BOLT	4	\$19
33	Q015115-1230	STUD BOLT	8	\$10
34	Q093225-4000	WIRE HOSE BAND	2	29
35	Q010505-1035	BOLT	2	\$1
36	Q020545-0120	NUT	8	\$1
37	Q020545-0100	NUT	18	\$1
38	Q020545-0055	NUT	4	\$1
39	Q045125-0120	SPRING WASHER	8	\$1
40	Q045125-0100	SPRING WASHER	18	\$1
41	Q045125-0080	SPRING WASHER	10	\$1
42	Q093225-0110	WIRE HOSE BAND	1	\$29
43	Q040145-0100	WASHER	4	\$1
44	Q019115-0625	BOLT	1	\$3
45	Q010505-1045	BOLT	4	\$3
46	Q064140-0430	SPLIT PIN	2	\$1
47	Q045125-0100	SPRING WASHER	1	\$1
48	Q048931-2300	STRAINER	1	\$176
51	Q1412-317030	CAP	4	\$9
53, 54, 55	QCOUPLING4"	COUPLING	2	\$157
56	Q1412-201240-0011	IMPELLER WASHER (GX270 & GX390)	1	\$14
56	Q4334-21240-0011	IMPELLER WASHER (L100)	1	\$14
57	Q052004-0425	KEY	1	\$18

FIVE YEAR WARRANTY ON ALL AUSSIE QP PUMPS
... subject to the use of genuine Aussie replacement parts.

RELIABLE PRODUCTS ... RELIABLE PEOPLE

