

# Aussie Pumps

## SEA SKIPPER MARINE PUMP

### AUSSIE SPARES DIAGRAM & PARTS LIST

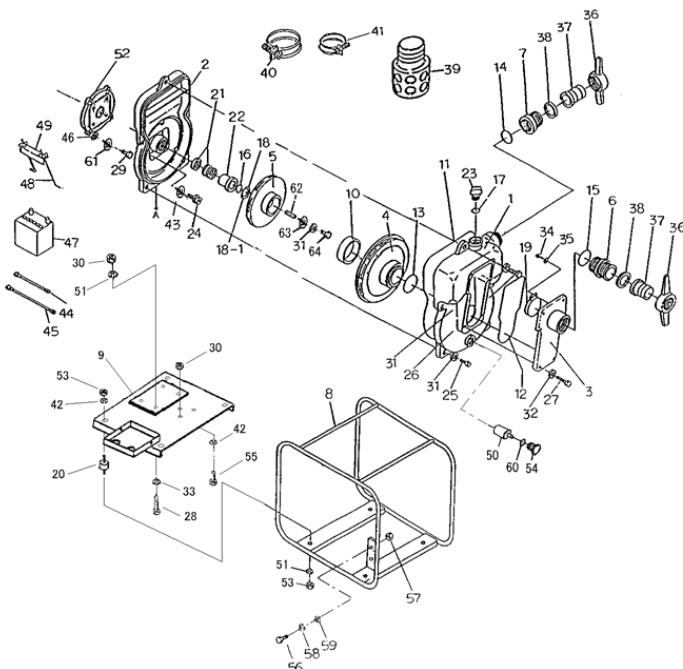
AUSSIE QP HIGH PRESSURE MARINE PUMPS  
QP310SL/L100, QP402SL/L100  
(AND ALL 1" KEYED SHAFT ENGINES)

## RENEW OR UPGRADE

WITH AN AUSSIE WET END KIT

## SL ONLY \$3,173

(P/N: QP310SLSK OR QP402SLEDKIT  
SUITS 1" KEYED SHAFT)



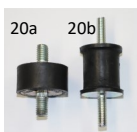
Purchase a kit and **SAVE** up to **40%**  
on buying individual parts

Pos	Part number	Description	Qty reqd	List price
1	Q1480-100010-P	CASING (POWDER COATED)	1	\$1,333
2	Q4421-100020-P	CASING COVER (POWDER COATED)	1	\$949
3	Q9430-100160-P	SUCTION COVER (POWDER COATED)	1	\$436
4	Q1445-080130	VOLUTE CASING (BRONZE)	1	\$666
5	Q4418-080030	IMPELLER (BRONZE)	1	\$473
6	Q079600-4040	4" NIPPLE (powder coated)	1	\$145
	Q079500-4030	3" NIPPLE (powder coated)	1	\$145
7	Q079690-4040	4" SOCKET (powder coated)	1	\$134
	Q079690-4030	3" SOCKET (powder coated)	1	\$134
8	Q2376-184010	FRAME	1	\$286
9	Q2376-184020	ENGINE BASE	1	\$672
10	Q1445-251220	LINER RING	1	\$198
11	Q048935-3850	O-RING (CASING)	1	\$102
12	Q048935-2400	O-RING (SUCTION COVER)	1	\$59
13	Q048131-0950	O-RING (VOLUTE CASING)	1	\$14
14	Q048131-1000	O-RING (SOCKET)	1	\$23
15	Q048131-1100	O-RING (NIPPLE)	1	\$26
16	Q048220-0240	O-RING (MECH SEAL SLEEVE)	1	\$10
17	Q048035-0300	O-RING (FLOODING/DRAIN CAP)	2	\$6
18	Q085283-4525	ADJUST LINER	1	\$9
18-1	Q085285-4525	ADJUST LINER	1	\$9
19	Q9430-350350	CHECK VALVE	1	\$98
20a	Q072330-2040	CUSHION RUBBER (18mm)	4	\$19
20b	Q072330-3032	CUSHION RUBBER (35mm)	4	\$35
21	Q080611-3630	MECHANICAL SEAL	1	\$271
22	Q081188-3051	MECHANICAL SEAL SLEEVE	1	\$329
23	Q063121-1100ASS	FLOODING/DRAIN CAP	2	\$21
24	Q010509-0820	BOLT	4	\$1
25	Q010509-1240	BOLT	4	\$6
26	Q010509-1250	BOLT	1	\$6
27	Q010509-1040	BOLT	6	\$3
28	Q010509-1060	BOLT	4	\$8
29	Q010509-0825	BOLT	4	\$1
30	Q020549-0100	NUT	6	\$1
31	Q045129-0120	SPRING WASHER	5	\$1
32	Q045129-0100	SPRING WASHER	6	\$1
33	Q040165-0100	WASHER	4	\$1
34	Q014109-0616	SCREW	2	\$1
35	Q040165-0060	WASHER	2	\$1
36,37,38	Q074111-1100-Z	4" HOSE COUPLING SET (ZINC)	2	\$198
36,37,38	Q074110-1080-Z	4" HOSE COUPLING SET (ZINC)	2	\$198
39	Q074221-2100-Z	4" STRAINER (ZINC)	1	\$160
39	Q074221-1080-z	3" STRAINER (ZINC)	1	\$160
40	Q093126-4000	4" WIRE HOSE BAND	3	\$10
41	Q093126-3000	3" WIRE HOSE BAND	3	\$63

#### Replacement Kits

Part number	Description	Positions	List Price
Q402-ORKT	O ring Kit	11, 12, 13, 14, 15, 16, 17	\$62
Q402REJ-2	Rejuvenation Kit	11, 12, 13, 14, 15, 16, 17, 18, 21	\$328

Position	Part number	Description	Qty reqd	List price
42	Q045129-0100	SPRING WASHER	6	\$1
43	Q045822-0080	SEAL WASHER	4	\$11
44	Q097209-9300	SHORT CORD	1	\$57
45	Q097209-9450	LONG CORD	1	\$103
46	Q045129-0080	SPRING WASHER	4	\$0
47	Q096120-3035D	BATTERY	1	\$405
48	Q095021-1220A	BATTERY SET KIT	2	\$14
49	Q095025-1170	BATTERY SET PLATE	1	\$15
50	Q082122-0800	ZINC ANODE	1	\$86
51	Q045129-0080	SPRING WASHER	8	\$0
52	Q4313-000600-Z	CASING COVER SET PLATE	1	\$88
53	Q020549-0080	NUT	8	\$0
54	Q063122-1106	DRAIN CAP	1	\$31
55	Q010509-1045	BOLT	2	\$3
56	Q010509-0612	BOLT	2	\$1
57	Q020549-0060	NUT	2	\$1
58	Q045129-0060	SPRING WASHER	2	\$1
59	Q040165-0060	WASHER	2	\$1
60	Q074430-0251	PACKING	1	\$2
61	Q040165-0080	SPRING WASHER	4	\$1
62	Q052004-0422	KEY	1	\$18
63	Q2470-251240	IMPELLER WASHER	1	\$15
64	Q019119-0732	BOLT	1	\$13



Two types of engine mounts used,  
check style before ordering.

**8 BAR pressure relief valve,**  
suits SX & SL high pressure pumps  
Stock code: Q078908-3408 **\$225**



**FIVE YEAR WARRANTY ON ALL AUSSIE QP PUMPS**  
... subject to the use of genuine Aussie replacement parts.