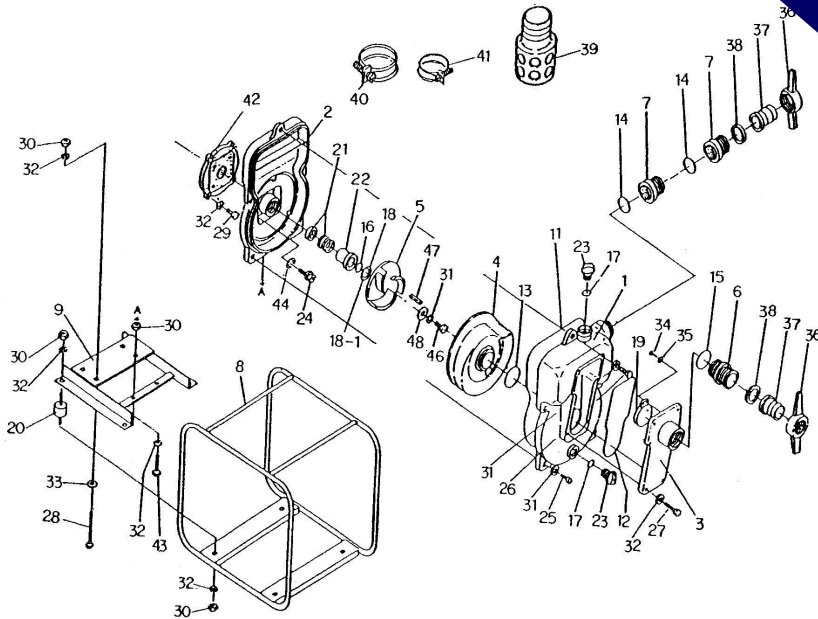


RENEW OR UPGRADE

YOUR PUMP WITH AN
AUSSIE WET END KIT

ONLY \$1,578

SUITS 1" KEYED SHAFT
(P/N: QP402KITN/F
OR QP310KIT)



Purchase a kit and **SAVE up to 40%**
on buying individual parts

Replacement Kits

Part number	Description	Positions	List Price
Q402-ORKT	O ring Kit	11, 12, 13, 14, 15, 16, 17	\$62
Q402REJ-2	Rejuvenation Kit	11, 12, 13, 14, 15, 16, 17, 18, 21	\$328

FIVE YEAR WARRANTY ON ALL AUSSIE QP PUMPS

... subject to the use of genuine Aussie replacement parts.

Pos	Part number	Description	Qty reqd	List price
1	Q1480-100010	CASING	1	\$1,278
2	Q4421-100020	MOUNTING FLANGE	1	\$894
3	Q9430-100160	SUCTION COVER	1	\$381
4	Q9430-000130	VOLUTE CASING	1	\$392
	Q4414-000030	IMPELLER for 1" keyed shaft	1	\$307
5	Q2461-000030	IMPELLER for 1" screwed shaft	1	\$307
	Q2445-000030	IMPELLER for Robin DY27 only	1	\$431
6	Q079000-4030-11	NIPPLE (QP310 VERSION)	1	\$134
	Q079000-4040-11	NIPPLE (QP402 VERSION)	1	\$134
7	Q079890-4030-11	SOCKET (QP310 VERSION)	1	\$171
	Q079890-4040-11	SOCKET (QP402 VERSION)	1	\$171
8	Q1434-214010-0014	FRAME	1	\$270
9	Q1440-214020-0004	ENGINE BASE	1	\$252
11	Q048935-3850	O-RING (CASING)	1	\$102
12	Q048935-2400	O-RING (SUCTION COVER)	1	\$59
13	Q048131-0950	O-RING (VOLUTE CASING)	1	\$14
14	Q048131-1000	O-RING (SOCKET)	1	\$23
15	Q048131-1100	O-RING (NIPPLE)	1	\$26
16	Q048220-0240	O-RING (MECH SEAL SLEEVE—1" keyed shaft)	1	\$10
16	Q048131-0250	O-RING (MECH SEAL SLEEVE - 1" screwed shaft)	1	\$10
17	Q048035-0300	O-RING(FLOODING/DRAIN CAP)	2	\$6
18	Q085283-4525	ADJUST LINER	1	\$9
18-1	Q085285-4525	ADJUST LINER	1	\$9
19	Q9430-350350	CHECK VALVE	1	\$98
20a	Q072330-2040	CUSHION RUBBER (18mm)	4	\$19
20b	Q072330-3032	CUSHION RUBBER (35mm)	4	\$35
21	Q080611-3630	MECHANICAL SEAL	1	\$271
	Q081188-3051	MECHANICAL SEAL SLEEVE (1" keyed shaft)	1	\$329
22	Q081188-3056	MECHANICAL SEAL SLEEVE (1" screwed shaft)	1	\$329
23	Q063121-1100ASS	FLOODING/DRAIN CAP WITH O-RING	2	\$21
24	Q010505-0820	BOLT	4	\$1
25	Q010505-1240	BOLT	4	\$6
26	Q010505-1250	BOLT	1	\$6
27	Q010505-1040	BOLT	6	\$3
28	Q010505-1045	BOLT	4	\$3
29	Q019116-0625	BOLT	2	\$3
30	Q020545-0100	NUT	14	\$1
31	Q045125-0120	SPRING WASHER	5	\$1
32	Q045125-0100	SPRING WASHER	24	\$1
33	Q040145-0100	WASHER	4	\$1

Pos	Part number	Description	Qty reqd	List price
34	Q014109-0616	SCREW	2	\$1
35	Q040145-0060	WASHER	2	\$1
36, 37, 38	QCOUPLING3" or 4"	HOSE COUPLING	2	\$87
39	Q074221-2100	STRAINER	2	\$69
40	Q093225-4000	WIRE HOSE BAND	2	\$29
41	Q093225-0110	WIRE HOSE BAND	1	\$29
42	Q4313-000600-11	CASING COVER SET PLATE	1	\$152
43	Q010505-1040	BOLT	4	\$1
44	Q045822-0080	SEAL WASHER	4	\$11
46	Q019115-0730	IMPELLER SET BOLT	1	\$8
47	Q052004-0422	KEY	1	\$19
48	Q4334-201240-0011	IMPELLER WASHER	1	\$6



To ensure correct impeller is ordered compare vane type with impeller shown (i.e open vanes, for either a keyed or screwed impeller.)

Q4414-000030



Two types of engine mounts used, check style before ordering.

RELIABLE PRODUCTS ... RELIABLE PEOPLE

