

Aussie Pumps

AUSSIE SPARES DIAGRAM & PARTS LIST

AUSSIE QP TRANSFER PUMP: QP303/GX160, QP209/GX160/GX200
& 3" TRANSFER PUMPS ON ENGINES WITH 3/4" SHAFT

Renew or upgrade

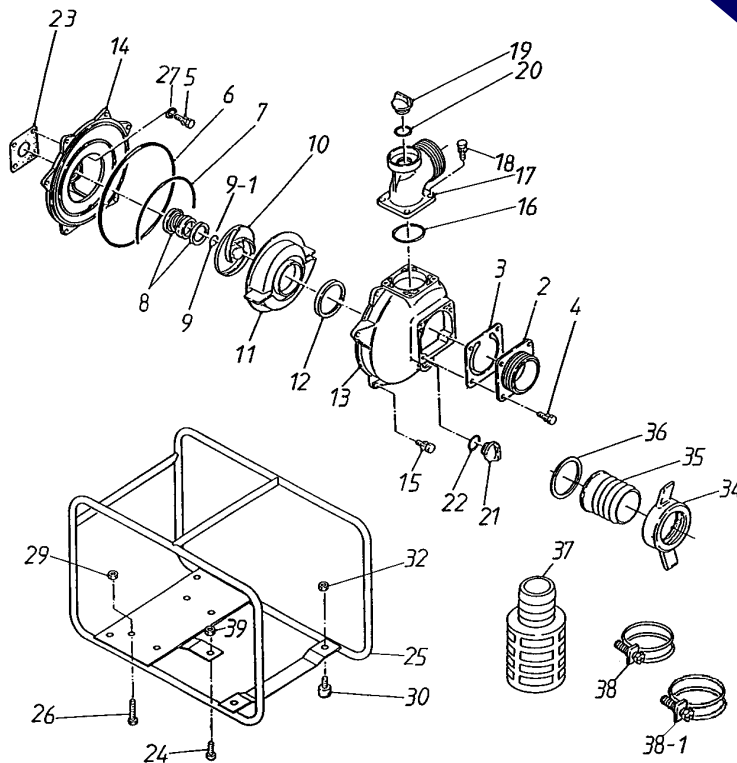
your pump with an
Aussie Wet End Kit

Only \$667

(p/n: QP303KIT N/F)

QP209KIT

3/4" screwed shaft only,
see below for adaptor from 5/8"

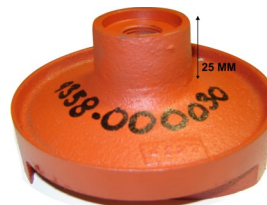


Purchase a kit and **SAVE up to 40%**
on buying individual parts

Replacement Kits

Part number	Description	Positions	List Price
Q303-ORKT	O ring Kit	6, 7, 12, 16, 20, 22	\$62
Q303REJ-2	Rejuvenation Kit	6, 7, 8, 9, 12, 16, 20, 23	\$108
Q205SREJIV-2	Viton seal rejuvenation Kit	3, 6, 7, 8, 9, 12, 16, 20, 22	\$299

To ensure correct impeller is ordered measure boss as shown below;



P shaft impeller (3/4" shaft) 10a



W shaft impeller 10b

NOTE:

To convert a 5/8" engine shaft to 3/4", in order to fit an Aussie QP303 wet end kit, use QTHREAD ADAPTOR \$40

Pos	Part number	Description	Qty	List price
2	Q4328-100160	3" SUCTION COVER	1	\$90
	Q1803-100160	2" SUCTION COVER	1	\$75
3	Q1378-350350	CHECK VALVE	1	\$74
4	Q018105-0825	BOLT SET WITH SPRING WASHER	4	\$1
5	Q019115-0525	BOLT	4	\$1
6	Q048935-2550	O-RING (CASING)	1	\$29
7	Q1378-330640	VOLUTE ROPE PACKING	1	\$18
8	Q080311-2320	MECHANICAL SEAL	1	\$79
9	Q085283-1600	ADJUST LINER (3/4" P shaft)	1	\$1
9	Q085283-1400	ADJUST LINER (5/8" P shaft GX160E & GX200E only)	1	\$1
9-1	Q085285-1600	ADJUST LINER (3/4" shaft)	1	\$1
9-1	Q085285-1600	ADJUST LINER (5/8" P shaft GX160E & GX200E only)		\$1
10a	Q9358-000030	IMPELLER (3/4" P shaft 25MM BOSS)	1	\$182
10b	Q1378-000030	IMPELLER (W shaft)	1	\$182
10c	Q4337-000030	IMPELLER (5/8" P shaft GX160E & GX200E only)	1	\$208
11	Q1378-100130	VOLUTE CASING	1	\$169
12	Q1378-330620	VOLUTE CASING PACKING	1	\$11
13	Q7304-100010	CASING	1	\$293
14	Q9358-100020	MOUNTING FLANGE	1	\$208
15	Q018105-0825	BOLT SET WITH SPRING WASHER	6	\$1
16	Q1803-330660	DELIVERY COVER PACKING	1	\$13
17	Q4328-100090	3" DELIVERY ELBOW	1	\$135
	Q1803-000090	DELIVERY ELBOW 2"	1	\$81
18	Q018105-0825	BOLT SET WITH SPRING WASHER	4	\$1
19	Q063121-1100ASS	FLOODING CAP WITH O-RING	1	\$21
20	Q048035-0300	O-RING (FLOODING CAP)	1	\$6
21	Q063121-1100ASS	DRAIN CAP WITH O-RING	1	\$21
22	Q048035-0300	O-RING (DRAIN CAP)	1	\$6
23	Q1211-390610	CASING COVER PACKING	1	\$4
24	Q018105-0820	BOLT SET WITH SPRING WASHER	1	\$1
25	Q1378-214012	FRAME	1	\$237
26	Q010505-0840	BOLT	4	\$1
27	Q045125-0080	SPRING WASHER	4	\$1
29	Q020915-0080	FLANGE NUT	4	\$1
30	Q072332-3040	CUSHION RUBBER	4	\$19
32	Q020915-0080	FLANGE NUT	4	\$1
34, 55, 36	QCOUPLING3"	HOSE COUPLING	2	\$87
37	QSTRAINER3"	STRAINER	1	\$68
38	Q093225-3000	WIRE HOSE BAND	3	\$10
38-1	Q093225-0090	WIRE HOSE BAND	2	\$10
39	Q020545-0080	NUT	1	\$1

FIVE YEAR WARRANTY ON ALL AUSSIE QP PUMPS

... subject to the use of genuine Aussie replacement parts.

RELIABLE PRODUCTS ... RELIABLE PEOPLE



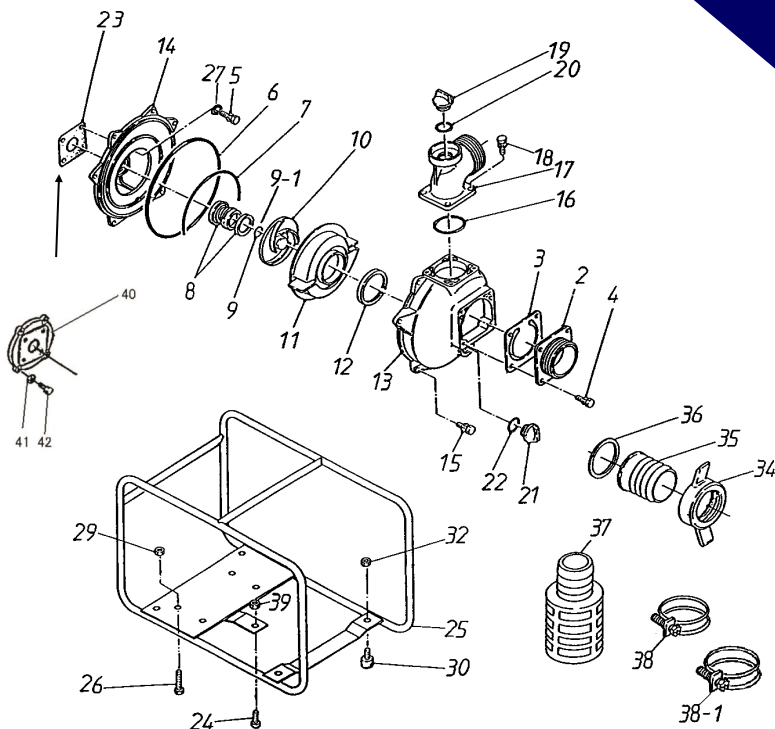
Aussie Pumps

AUSSIE SPARES DIAGRAM & PARTS LIST

AUSSIE QP TRANSFER PUMP: QP303/GX270, QP209/GX270, QP303/GX390 & 3" TRANSFER PUMPS ON ENGINES WITH 1" SCREWED SHAFT

Renew or upgrade
your pump with an
Aussie Wet End Kit
Only \$721

(p/n: QP303KIT1"
QP209KIT1")
1" screwed shaft only



Pos	Part number	Description	Qty	List price
2	Q4328-100160	3" SUCTION COVER	1	\$90
	Q1803-100160	2" SUCTION COVER	1	\$75
3	Q1378-350350	CHECK VALVE	1	\$74
4	Q018105-0825	BOLT SET WITH SPRING WASHER	4	\$1
5	Q019115-0525	BOLT	4	\$1
6	Q048935-2550	O-RING (CASING)	1	\$29
7	Q1378-330640	VOLUTE ROPE PACKING	1	\$18
8a	Q080611-3325	MECHANICAL SEAL (W SHAFT)	1	\$141
8b	Q080311-2930	MECHANICAL SEAL (1" P SHAFT)	1	\$321
9a	Q085283-3020	ADJUST LINER (W SHAFT)	1	\$8
9b	Q085283-2013	ADJUST LINER (P SHAFT)	1	\$8
9-1a	Q0852853020	ADJUST LINER (W SHAFT)	1	\$8
9-1b	Q085285-2013	ADJUST LINER (P SHAFT)	1	\$8
10a	Q4355-000030	IMPELLER (W SHAFT)	1	\$186
10b	Q1988-000030	IMPELLER (P SHAFT - GX390)	1	\$265
11	Q1378-100130	VOLUTE CASING	1	\$169
12	Q1378-330620	VOLUTE CASING PACKING	1	\$11
13	Q7304-100010	CASING	1	\$293
14a	Q4359-100020	CASING COVER (W SHAFT)	1	\$228
14b	Q1988-100020	CASING COVER (P SHAFT)	1	\$237
15	Q018105-0825	BOLT SET WITH SPRING WASHER	6	\$1
16	Q1803-330360	DELIVERY COVER PACKING	1	\$15
17	Q4328-100090	3" DELIVERY ELBOW	1	\$135
	Q1803-000090	DELIVERY ELBOW 2"	1	\$81
18	Q018105-0825	BOLT SET WITH SPRING WASHER	4	\$1
19	Q063121-1100ASS	FLOODING CAP WITH O-RING	1	\$21
20	Q048035-0300	O-RING (FLOODING CAP)	1	\$6
21	Q063121-1100ASS	DRAIN CAP WITH O-RING	1	\$21
22	Q048035-0300	O-RING (DRAIN CAP)	1	\$6
23	Q1211-390610	CASING COVER PACKING	1	\$4
24	Q018105-0820	BOLT SET WITH SPRING WASHER	1	\$1
25a	QFRAME303	FRAME	1	\$237
27	Q045125-0080	SPRING WASHER	4	\$1
29	Q020915-0080	FLANGE NUT	4	\$1
30	Q072330-2040	CUSHION RUBBER	4	\$19
32	Q020915-0080	FLANGE NUT	4	\$1
34, 55, 36	QCOUPLING3"	HOSE COUPLING	2	\$87
37	QSTRAINER3"	STRAINER	1	\$68
38	Q093225-3000	WIRE HOSE BAND	3	\$10
38-1	Q093225-0090	WIRE HOSE BAND	2	\$10
39	Q020545-0080	NUT	1	\$1
40	Q4357-000600-01	CASING COVER SET PLATE (1" p shaft)	1	\$136
41	Q019116-0625	BOLT	4	\$1

Purchase a kit and **SAVE up to 40%**
on buying individual parts

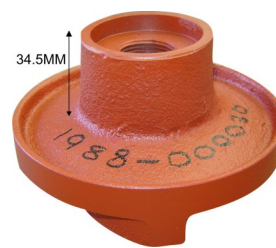
Replacement Kits

Part number	Description	Positions	List Price
Q303-ORKT	O ring Kit	6, 7, 12, 16, 20, 22	\$62
Q303SLREJKIT	Rejuvenation Kit (W shaft)	6, 7, 8, 12	\$251
Q303SLREJ-2	Rejuvenation Kit (1" P shaft)	6, 7, 8, 12, 16, 20, 23	\$251

To ensure correct impeller is ordered
measure boss as shown below;



W shaft impeller ...
Mostly GX270's 10a



1" P shaft impeller ...
Mostly GX390 10b

For Q keyed shaft QP303 pumps, contact Aussie for further
information before ordering parts.

RELIABLE PRODUCTS ... RELIABLE PEOPLE

