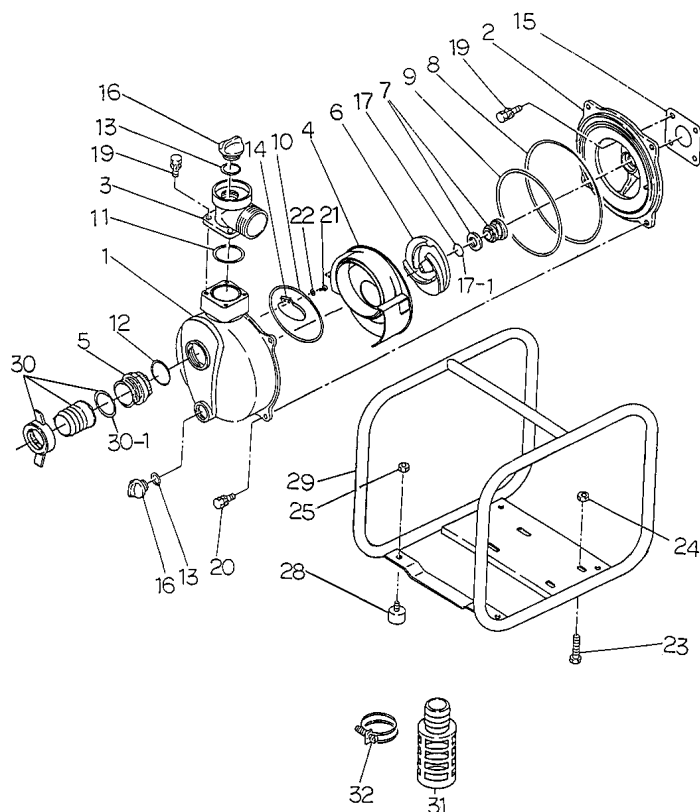


Aussie Pumps

AUSSIE SPARES DIAGRAM & PARTS LIST

AUSSIE QP TRANSFER PUMPS: QP207/GX120
QP207/GX160



Pos	Part number	Description	Qty	List price
1	Q4250-100010	CASING	1	\$288
2	Q1877-100020	MOUNTING FLANGE	1	\$261
3	Q1211-100090	DELIVERY ELBOW	1	\$150
4	Q1877-100130	VOLUTE CASING	1	\$120
5	Q079200-2020R	NIPPLE	1	\$59
6	Q1217-000030	IMPELLER (GX120) W SHAFT	1	\$132
6	Q1864-000030	IMPELLER (GX160) 3/4" SHAFT	1	\$132
7	Q080611-2918	MECHANICAL SEAL (GX120) W SHAFT	1	\$79
7	Q080311-2320	MECHANICAL SEAL (GX160) 3/4" SHAFT	1	\$79
8	Q048924-2100	SHAFT	1	\$31
9	Q048924-1780	O-RING (CASING)	1	\$29
10	Q048220-1200	O-RING (VOLUTE CASING)	1	\$22
11	Q048220-0720	O-RING (SUCTION COVER)	1	\$8
12	Q048131-0550	O-RING (DELIVERY ELBOW)	1	\$8
13	Q048035-0300	O-RING (NIPPLE)	2	\$6
14	Q1211-350350	O-RING FLOODING / DRAIN CAP	1	\$36
15	Q1211-390610	CHECK VALVE	1	\$4
16	Q063121-1100ASS	CASING COVER PACKING	2	\$21
17	Q085283-1713	FLOODING/DRAIN CAP WITH O-RING	1	\$6
17-1	Q085285-1713	ADJUST LINER (GX120)	1	\$6
17	Q085283-1600	ADJUST LINER (GX160)	1	\$6
19	Q018105-0820	ADJUST LINER	8	\$3
20	Q018105-1025	BOLT SET WITH SPRING WASHER	4	\$3
21	Q014109-0510	BOLT SET WITH SPRING WASHER	2	\$1
22	Q040145-0050	SCREW	2	\$1
23	Q010505-0840	WASHER	4	\$3
24	Q020915-0080	BOLT	4	\$1
25	Q020915-0060	FLANGE NUT	4	\$1
28	Q072332-2030R	FLANGE NUT	4	\$13
29	Q1293-214010-0004	CUSHION RUBBER	1	\$138
30	QCOUPLING2"AL	FRAME	2	\$77
31	QSTRAINER1.5"	HOSE COUPLING SET	1	\$40
32	Q093225-2000	STRAINER	3	\$13
		WIRE HOSE BAND		

Purchase a kit and **SAVE** up to **40%**
on buying individual parts

Replacement Kits

Part number	Description	Positions	List Price
Q207REJ/GX120-2	Rejuvenation Kit Version 2	7, 8, 9, 10, 11, 12, 13, 15, 17	\$97
Q207REJ/GX160-2	Rejuvenation Kit Version 2	7, 8, 9, 10, 11, 12, 13, 15, 17	\$97

FIVE YEAR WARRANTY
ON ALL AUSSIE QP PUMPS
... subject to the use of genuine Aussie replacement parts.

RELIABLE PRODUCTS ... RELIABLE PEOPLE