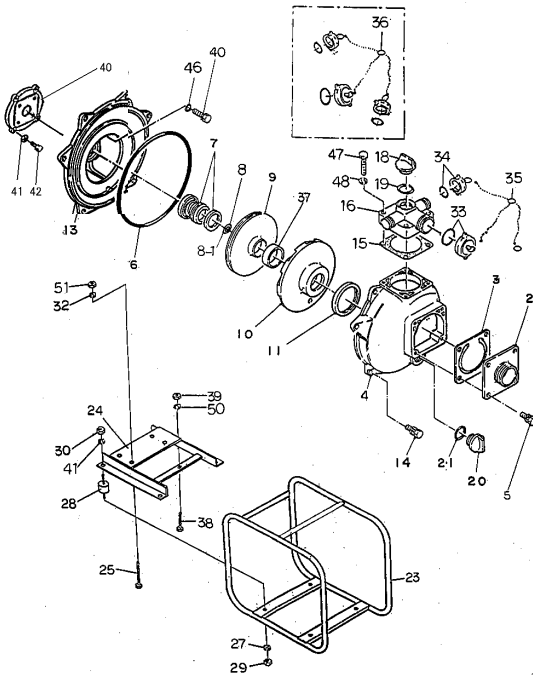


## RENEW OR UPGRADE

YOUR PUMP WITH AN AUSSIE WET END KIT

## \$815

(P/N: QP205SLKIT1"P  
SUITS ANY 1" SCREWED SHAFT ENGINE)



Purchase a kit & **SAVE** up to **40%**  
on buying individual parts

Pos	Part number	Description	Qty	List price
2	Q1803-100160	2" SUCTION COVER	1	\$75
2	Q4725-060160-0011	1.5" SUCTION COVER	1	\$142
2	Q4904-000160	2.5" SUCTION COVER	1	\$142
2	Q4328-100160	3" SUCTION COVER	1	\$90
3	Q1378-350350	CHECK VALVE	1	\$74
4	Q7304-100010	CASING WITH LOGO	1	\$293
5	Q018105-0825	BOLT SET WITH SPRING WASHER	4	\$1
6	Q048935-2550	O-RING (CASING)	1	\$29
7	Q080611-3325	MECHANICAL SEAL (W shaft)	1	\$141
7	Q080311-2930	MECHANICAL SEAL (1" P screwed shaft)	1	\$321
8	Q085283-3020	ADJUST LINER (W shaft)	1	\$8
8	Q085283-2013	ADJUST LINER (1" P screwed shaft)	1	\$8
8-1	Q085285-3020	ADJUST LINER (W shaft)	1	\$8
8-1	Q085285-2013	ADJUST LINER (1 P screwed shaft)	1	\$8
9	Q1955-060030	IMPELLER (W shaft)	1	\$185
9	Q1883-060030	IMPELLER (1" P screwed shaft)	1	\$314
10	Q1803-100130	VOLUTE CASING	1	\$94
11	Q1378-330620	VOLUTE CASING PACKING	1	\$11
13	Q4359-100020	MOUNTING FLANGE(W shaft)	1	\$228
13	Q1988-100020	MOUNTING FLANGE(1" P screwed shaft)	1	\$237
14	Q018105-0825	BOLT SET WITH SPRING WASHER	6	\$1
15	Q1803-330360	DELIVERY COVER PACKING	1	\$15
16	Q1814-100090	DELIVERY COVER (3way Outlet)	1	\$87
16	Q1803-000090	DELIVERY ELBOW 2"	1	\$81
16	Q4904-000090	DELIVERY ELBOW 2.5"	1	\$207
16	Q4328-100090	DELIVERY ELBOW 3"	1	\$135
18	Q063121-1100ASS	FLOODING CAP WITH O-RING	1	\$21
19	Q048035-0300	O-RING (FLOODING CAP)	1	\$6
20	Q063121-1100ASS	DRAIN CAP WITH O-RING	1	\$21
21	Q048035-0300	O-RING (DRAIN CAP)	1	\$6
23	QFRAMEL48GAL	FRAME	1	\$329
24	Q1867-214020-0004	ENGINE BASE (GX270)	1	\$145
24	Q1988-214021-0004	ENGINE BASE (GX390)	1	\$160
25	Q010505-1045	BOLT	4	\$1
27	Q045125-0100	SPRING WASHER	4	\$1
28	Q072330-2040	CUSHION RUBBER	4	\$19
29	Q020545-0100	NUT	4	\$1
30	Q020545-0100	NUT	4	\$1
32	Q045125-0100	SPRING WASHER	4	\$1
36	QCAPS&CHAINS	CAPS & CHAINS	1	\$81
37	Q1803-521221	LINER RING	1	\$39
38	Q010505-0850	BOLT	1	\$1
39	Q020545-0080	NUT	1	\$1
40	Q4357-000600-01	CASING COVER SET PLATE	1	\$136
41	Q045129-0070	SPRING WASHER	5	\$1

#### Replacement Kits

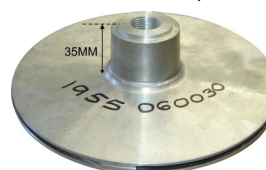
Part number	Description	Positions	List Price
Q205S-ORKT	O ring Kit	6, 11, 15, 19, 21,37	\$62
Q205SLWREJ-2	Rejuvenation Kit (W shaft) Version 2	6, 7, 8, 11, 15, 19, 21,37	\$295
Q205SLREJGX390-2	Rejuvenation Kit (1" P screwed shaft) Version 2	6, 7, 8, 11, 15, 19, 21, 37	\$295

Pos	Part number	Description	Qty	List price
42	Q019116-0625	BOLT	4	\$1
44	Q019116-0625	BOLT (1" P screwed shaft)	4	\$1
45	Q014105-0815	SCREW	4	\$1
	Q010505-1050	BOLT	4	\$1
46	Q045822-0080	SEAL WASHER	4	\$11
47	Q010505-0845	BOLT	4	\$1
48	Q045125-0080	SPRING WASHER	4	\$1
49	Q045125-0080	SPRING WASHER	4	\$1
50	Q045125-0080	SPRING WASHER	1	\$1
51	Q020545-0100	NUT	4	\$1

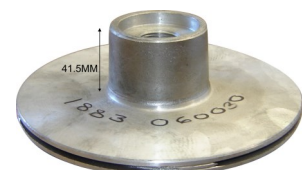


**8 BAR, suits single impeller fire pumps**  
Stock code: Q078908-3408 **\$225**

To ensure correct impeller is ordered measure boss as shown below;



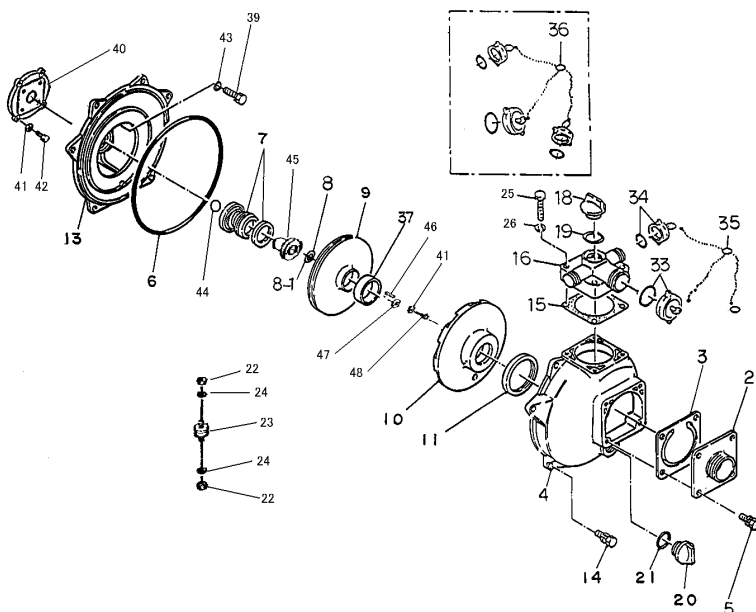
W shaft impeller



1" P shaft impeller

See next page for 1" Q (keyed) shaft pumps

**RELIABLE PRODUCTS ... RELIABLE PEOPLE**



Pos	Part number	Description	Qty	List price
2	Q1803-100160	2" SUCTION COVER	1	\$75
2	Q4725-060160-0011	1.5" SUCTION COVER	1	\$142
2	Q4904-000160	2.5" SUCTION COVER	1	\$142
2	Q4328-100160	3" SUCTION COVER	1	\$90
3	Q1378-350350	CHECK VALVE	1	\$74
4	Q7304-100010	CASING	1	\$293
5	Q018105-0825	BOLT SET WITH SPRING WASHER	4	\$1
6	Q048935-2550	O-RING (CASING)	1	\$29
7	Q080311-2930	MECHANICAL SEAL (1" shaft)	1	\$321
8	Q085283-4525	ADJUST LINER (1" Q keyed shaft)	1	\$8
8-1	Q085285-4525	ADJUST LINER (1" Q keyed shaft)	1	\$8
9	Q2260-060030	IMPELLER (1" Q keyed shaft)	1	\$312
10	Q1803-100130	VOLUTE CASING	1	\$94
11	Q1378-330620	VOLUTE CASING PACKING	1	\$11
13	Q1988-100020	MOUNTING FLANGE (1" Q keyed shaft)	1	\$237
14	Q018105-0825	BOLT SET WITH SPRING WASHER	6	\$1
15	Q1803-330360	DELIVERY COVER PACKING	1	\$15
16	Q1814-100090	DELIVERY COVER (3 way Outlet)	1	\$87
16	Q1803-000090	DELIVERY ELBOW 2"	1	\$81
16	Q4904-000090	DELIVERY ELBOW 2.5"	1	\$207
16	Q4328-100090	DELIVERY ELBOW 3"	1	\$135
18	Q063121-1100ASS	FLOODING CAP WITH O-RING	1	\$21
19	Q048035-0300	O-RING (FLOODING CAP)	1	\$6
20	Q063121-1100ASS	DRAIN CAP WITH O-RING	1	\$21
21	Q048035-0300	O-RING (DRAIN CAP)	1	\$6
22	Q020545-0100	NUT (CUSHION RUBBER)	8	\$1
23	Q072330-2546	CUSHION RUBBER	4	\$19
24	Q045125-0100	SPRING WASHER (CUSHION RUBBER)	8	\$1
25	Q010505-0845	BOLT	4	\$1
26	Q045125-0080	SPRING WASHER	4	\$1
36	QCAPS&CHAINS	CAPS & CHAINS	1	\$81
37	Q1803-521221	LINER RING	1	\$39
39	Q010505-0825	BOLT	4	\$1
40	Q4357-000600-01	CASING COVER SET PLATE	1	\$136
41	Q045129-0070	SPRING WASHER	5	\$1
42	Q019116-0625	BOLT	4	\$1
43	Q045822-0080	SEAL WASHER	4	\$1
44	Q048220-0240	O-RING (MECHANICAL SEAL SLEEVE)	1	\$6
45	Q081188-5449	MECHANICAL SEAL SLEEVE (1" Q shaft)	1	\$75
46	Q052004-0422	KEY	1	\$6
47	Q1412-201240-0011	IMPELLER WASHER	1	\$6
48	Q010709-0632	BOLT	1	\$1

Purchase a kit and **SAVE** up to **40%**  
on buying individual parts

#### Replacement Kits

Part number	Description	Positions	List Price
Q205S-ORKIT	O ring Kit	6, 11, 15, 19, 21, 37	\$62
Q205SLREJGX390-2	Rejuvenation Kit Version 2	6, 7, 11, 15, 19, 21, 37	\$295

Note: Adjustable liner supplied in the rejuvenation kit is not suitable for the keyed shaft version. If required order adjustable liner as a separate item.



**NEW**  
Optional ...  
Aussie Spike Protection  
pressure relief valve ...  
fits in place of priming plug

8 BAR, suits single impeller fire pumps  
Stock code: Q078908-3408 \$225<sup>+GST</sup>