

Aussie Pumps

AUSSIE SPARES DIAGRAM & PARTS LIST

AUSSIE QP FIRE PUMPS: AUSSIE FIRE CHIEF (QP-205SE) and 2" & 3" fire pumps with engines less than 8HP

Renew or upgrade

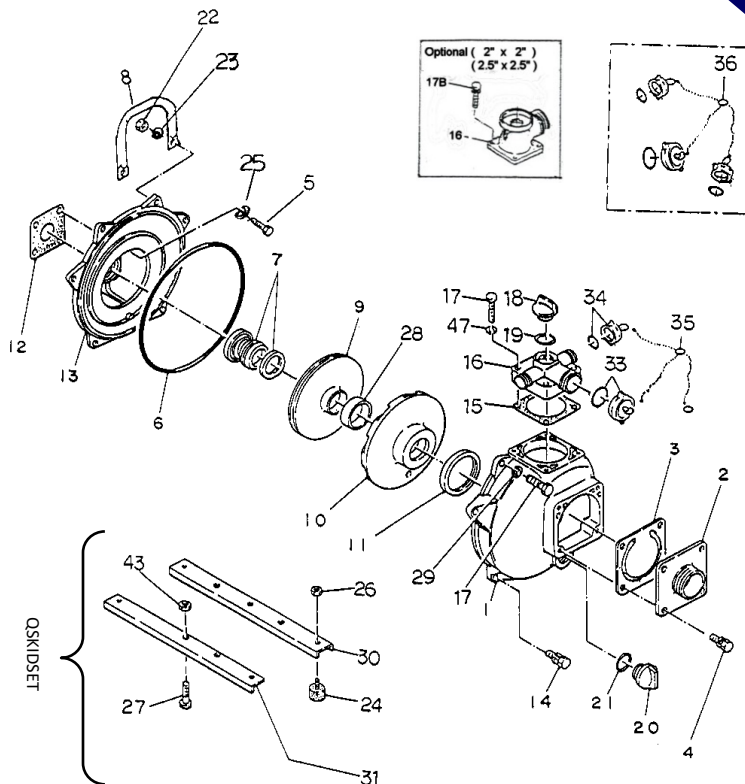
your pump with an Aussie Wet End Kit

Only \$466

p/n: QP205SEKIT.... 3/4" screwed shaft
p/n QP205SEKIT 5/8" ...5/8" screwed shaft



Purchase a kit and **SAVE up to 40%** on buying individual parts



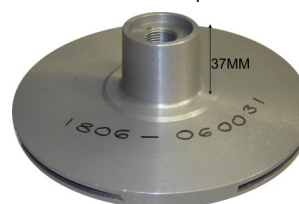
| Pos | Part number | Description | Qty | List price |
|-------------------|------------------------------|------------------------------------|-----|------------|
| 1 | Q4364-100010 Q7304-100010 | CASING CASING WITH LOGO | 1 | \$293 |
| 2 | Q1803-100160 | 2" SUCTION COVER | 1 | \$75 |
| 2 | Q4725-060160-0011 | 1.5" SUCTION COVER | 1 | \$142 |
| 2 | Q4904-000160 | 2.5" SUCTION COVER | 1 | \$142 |
| 3 | Q1378-350350 | CHECK VALVE | 1 | \$74 |
| 4 | Q018105-0825 | BOLT SET WITH SPRING WASHER | 4 | \$1 |
| 5 | Q019115-0525 | BOLT | 4 | \$1 |
| 6 | Q048935-2550 | O-RING (CASING) | 1 | \$29 |
| 7a | Q080311-2320 | MECHANICAL SEAL | 1 | \$79 |
| 7b | Q080311-2320V | VITON MECHANICAL SEAL | 1 | \$134 |
| 8 | Q1883-207010-0003 | HANDLE | 1 | \$52 |
| 9a | Q1806-060031 | IMPELLER 3/4" P Shaft (37mm boss) | 1 | \$211 |
| 9b | Q1803-060031 | IMPELLER W Shaft (18mm boss) | 1 | \$211 |
| 9c | Q1814-060030 | IMPELLER 5/8th P Shaft (37mm boss) | 1 | \$211 |
| 9d | Q2242-060030 | IMPELLER for diesel engines | 1 | \$211 |
| 10 | Q1803-100130 | VOLUTE CASING | 1 | \$94 |
| 11 | Q1378-330620 | VOLUTE CASING PACKING | 1 | \$11 |
| 12 | Q1211-390610 | CASING COVER PACKING | 1 | \$4 |
| 13 | Q9358-100020 | MOUNTING FLANGE - P Type | 1 | \$207 |
| 13 | Q1378-100020 | MOUNTING FLANGE - W Type | 1 | \$207 |
| 14 | Q018105-0825 | BOLT SET WITH SPRING WASHER | 4 | \$1 |
| 15 | Q1803-330360 | DELIVERY COVER PACKING | 1 | \$15 |
| 16 | Q1814-100090 | DELIVERY COVER (3way Outlet) | 1 | \$87 |
| 16 | Q1803-000090 | DELIVERY ELBOW 2" | 1 | \$81 |
| 16 | Q4904-000090 | DELIVERY ELBOW 2.5" | 1 | \$208 |
| 17 | Q010505-0845 | BOLT | 6 | \$1 |
| 18 | Q063121-1100ASS | FLOODING CAP WITH O-RING | 1 | \$21 |
| 19 | Q048035-0300 | O-RING (FLOODING CAP) | 1 | \$6 |
| 20 | Q063121-1100ASS | FLOODING CAP WITH O-RING | 1 | \$21 |
| 21 | Q048035-0300 | O-RING (DRAIN CAP) | 1 | \$6 |
| 22 | Q020915-0080 | FLANGE NUT | 2 | \$1 |
| 23 | Q040145-0080 | WASHER | 2 | \$1 |
| 24,26,27,30,31,43 | QSKIDSET | SKID SET | 1 | \$99 |
| 28 | Q1803-521221 | LINER RING | 1 | \$39 |
| 29 | Q045125-0080 | SPRING WASHER | 2 | \$1 |
| 36 | QCAPS&CHAINS | CAPS & CHAINS | 1 | \$81 |
| 47 | 045125-0080 | SPRING WASHER | 4 | \$1 |

Replacement Kits

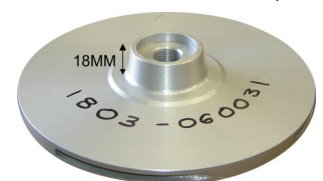
| Part number | Description | Positions | List Price |
|-------------|-----------------------------|-------------------------------|------------|
| Q205S-ORKIT | O ring Kit | 6, 11, 15, 19, 21, 28 | \$62 |
| Q205SREJ-2 | Rejuvenation Kit Version 2 | 6, 7a, 11, 12, 15, 19, 21, 28 | \$108 |
| Q205SREJV-2 | Viton seal rejuvenation Kit | 3, 6, 7b, 11, 15, 19, 21, 28 | \$299 |

Note: for diesel drive pumps, other than Robins, use size of engine shaft to determine correct parts

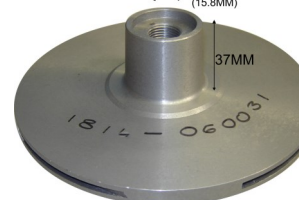
To ensure correct impeller is ordered measure boss as shown below;



3/4" P shaft impeller 9a
5/8" THREAD, (15.8MM)



W shaft impeller 9b



5/8" P shaft impeller 9c
(as used on GX160E & GX200E only)



8 BAR, suits single impeller fire pumps
Stock code: Q078908-3408 \$225

FIVE YEAR WARRANTY ON ALL AUSSIE QP PUMPS

... subject to the use of genuine Aussie replacement parts.

