

| Position | Part number | Description | Qty | List price |
|----------|-------------------|-----------------------------|-----|------------|
| 1 | Q1133-100010 | CASING | 1 | \$121 |
| 2 | Q1133-100020 | MOUNTING FLANGE | 1 | \$59 |
| 3 | Q1133-100130 | VOLUTE CASING | 1 | \$24 |
| 4 | Q1133-100030 | IMPELLER | 1 | \$26 |
| 5 | Q085283-1208 | ADJUST LINER | 4 | \$6 |
| 6 | Q080311-1908 | MECHANICAL SEAL | 1 | \$68 |
| 7 | Q048220-0950 | O-RING (VOLUTE CASING : S) | 1 | \$6 |
| 8 | Q048131-1200 | O-RING (CASING) | 1 | \$6 |
| 9 | Q048220-0560 | O-RING (VOLUTE CASING : L) | 1 | \$3 |
| 10 | Q063121-1060ASSY | FLOODING CAP WITH O-RING | 2 | \$20 |
| 10-1 | Q048131-0250 | O-RING (FLOODING/DRAIN CAP) | 2 | \$4 |
| 11 | Q1101-350350 | CHECK VALVE | 1 | \$18 |
| 12 | Q014109-0510 | SCREW | 1 | \$1 |
| 13 | Q040145-0050 | WASHER | 1 | \$1 |
| 14 | Q018105-0825 | BOLT SET WITH SPRING WASHER | 2 | \$1 |
| 15 | Q018105-0835 | BOLT SET WITH SPRING WASHER | 2 | \$1 |
| 16 | Q045822-0050 | SEAL WASHER | 4 | \$8 |
| 17 | Q010505-0525 | BOLT | 4 | \$4 |
| 18 | Q093225-1000 | WIRE HOSE BAND | 3 | \$8 |
| 19 | Q074111-9025 | HOSE COUPLING SET | 2 | \$31 |
| 19-1 | Q074131-0321 | HOSE COUPLING PACKING | 2 | \$6 |
| 20 | Q074230-1025 | STRAINER | 1 | \$41 |
| 22 | Q1134-214010-0014 | BASE | 1 | \$68 |
| 23 | Q1133-346050 | RUBBER CAP | 4 | \$6 |

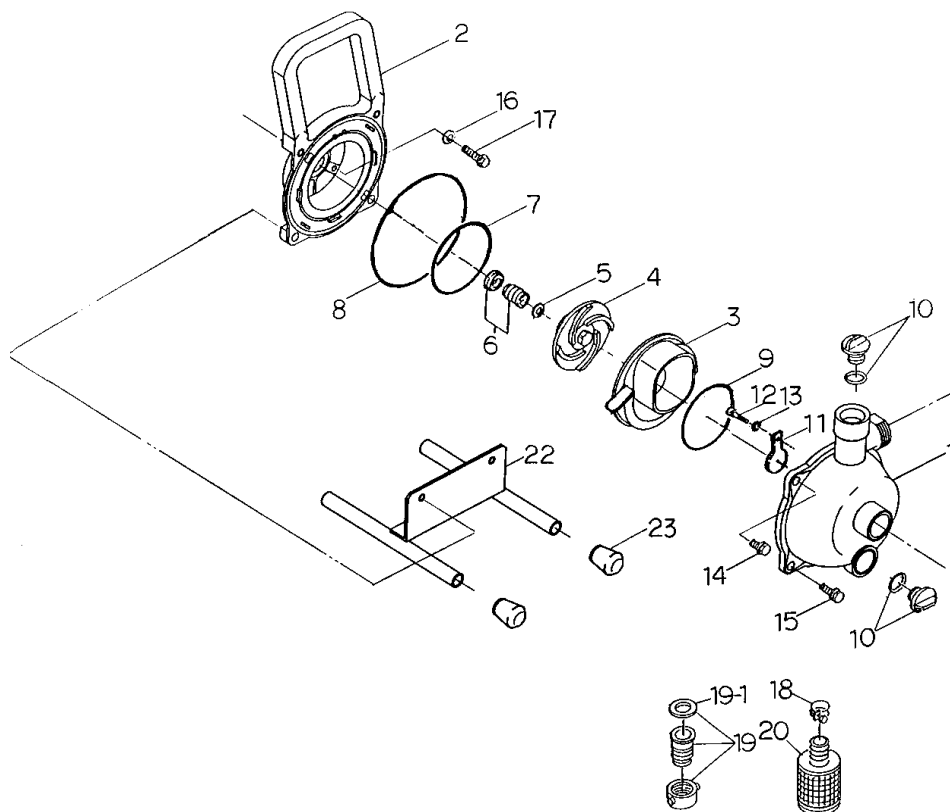
Purchase a kit and **SAVE** up to **40%**
on buying individual parts

Rejuvenation Kit

| Part number | Description | Positions | List price |
|-------------|-------------------------------|---------------------|------------|
| Q1REJ-2 | Rejuvenation Kit Version 2 | 5, 6, 7, 8, 9, 10-1 | \$50 |

FIVE YEAR WARRANTY
ON ALL AUSSIE QP PUMPS
... subject to the use of genuine
Aussie replacement parts.





| Position | Part number | Description | Qty | List price |
|----------|-------------------|-----------------------------|-----|------------|
| 1 | Q1133-100010 | CASING | 1 | \$121 |
| 2 | Q1133-100020 | MOUNTING FLANGE | 1 | \$59 |
| 3 | Q1133-100130 | VOLUTE CASING | 1 | \$24 |
| 4 | Q1133-100030 | IMPELLER | 1 | \$26 |
| 5 | Q085283-1208 | ADJUST LINER | 4 | \$6 |
| 6 | Q080311-1908 | MECHANICAL SEAL | 1 | \$68 |
| 7 | Q048220-0950 | O-RING (VOLUTE CASING : S) | 1 | \$6 |
| 8 | Q048131-1200 | O-RING (CASING) | 1 | \$6 |
| 9 | Q048220-0560 | O-RING (VOLUTE CASING : L) | 1 | \$3 |
| 10 | Q063121-1060ASSY | FLOODING CAP WITH O-RING | 2 | \$20 |
| 10-1 | Q048131-0250 | O-RING (FLOODING/DRAIN CAP) | 2 | \$4 |
| 11 | Q1101-350350 | CHECK VALVE | 1 | \$18 |
| 12 | Q014109-0510 | SCREW | 1 | \$1 |
| 13 | Q040145-0050 | WASHER | 1 | \$1 |
| 14 | Q018105-0825 | BOLT SET WITH SPRING WASHER | 2 | \$1 |
| 15 | Q018105-0835 | BOLT SET WITH SPRING WASHER | 2 | \$1 |
| 16 | Q045822-0050 | SEAL WASHER | 4 | \$8 |
| 17 | Q010505-0525 | BOLT | 4 | \$4 |
| 18 | Q093225-1000 | WIRE HOSE BAND | 3 | \$8 |
| 19 | Q074111-9025 | HOSE COUPLING SET | 2 | \$31 |
| 19-1 | Q074131-0321 | HOSE COUPLING PACKING | 2 | \$6 |
| 20 | Q074230-1025 | STRAINER | 1 | \$41 |
| 22 | Q1133-214010-0014 | BASE | 1 | \$68 |
| 23 | Q1133-346050 | RUBBER CAP | 4 | \$6 |

Purchase a kit and **SAVE** up to **40%**
on buying individual parts

Rejuvenation Kit

| Part number | Description | Positions | List price |
|-------------|-------------------------------|---------------------|------------|
| Q1REJ-2 | Rejuvenation Kit Version 2 | 5, 6, 7, 8, 9, 10-1 | \$50 |

FIVE YEAR WARRANTY
ON ALL AUSSIE QP PUMPS
... subject to the use of genuine
Aussie replacement parts.

