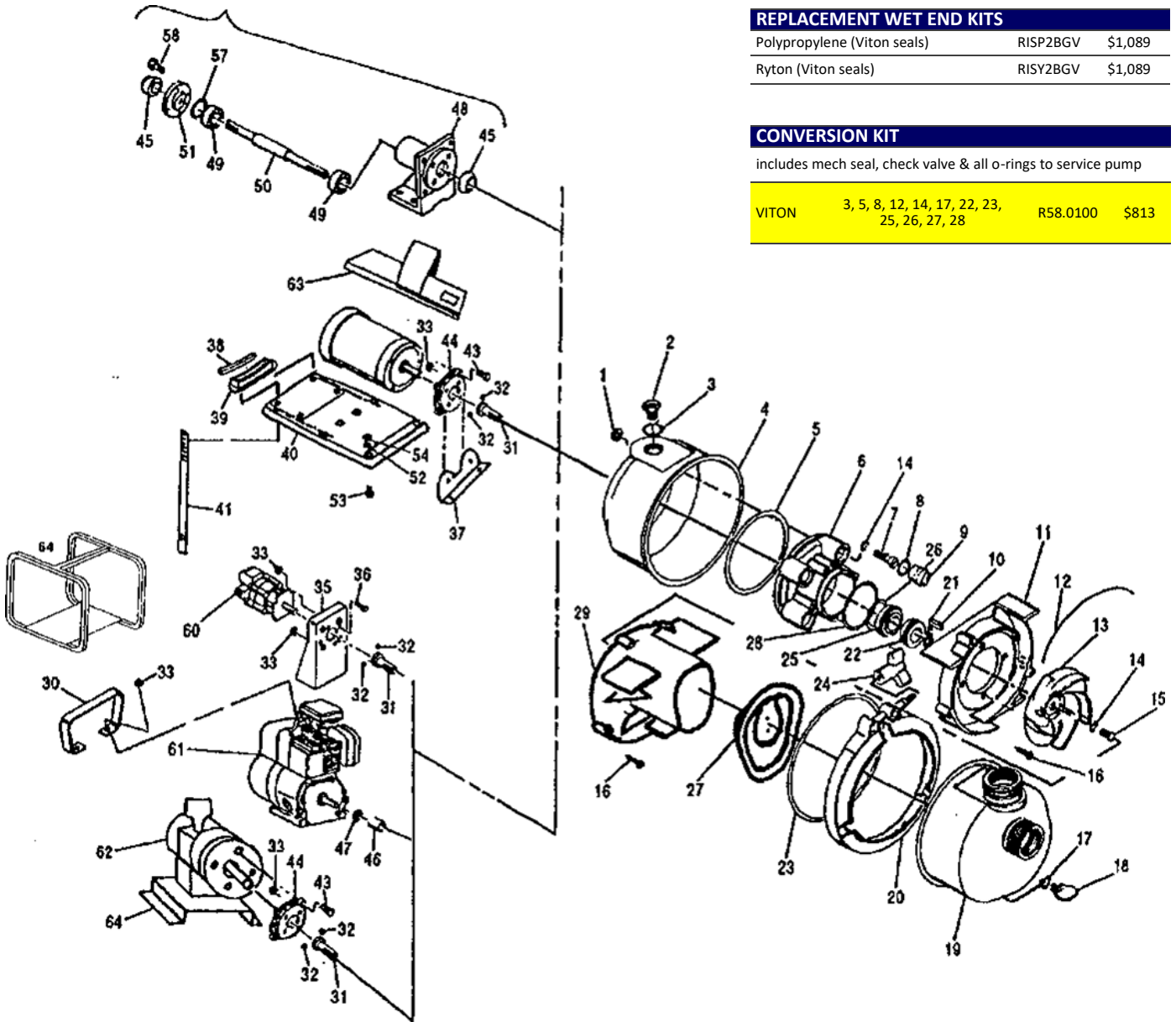


AUSSIE STAINLESS STEEL PUMPS I SERIES



REPLACEMENT WET END KITS

Polypropylene (Viton seals)	RISP2BGV	\$1,089
Ryton (Viton seals)	RISY2BGV	\$1,089

CONVERSION KIT

includes mech seal, check valve & all o-rings to service pump

VITON	3, 5, 8, 12, 14, 17, 22, 23, 25, 26, 27, 28	R58.0100	\$813
-------	---	----------	-------

Item	Part#	Part Description	Qty/ Pump	List price EACH
1	R58.1244.30	SPACER, Polyester, Black (ISE Model Pumps)	4	\$6
	R58.1244.60	SPACER, Ryton, Brown (ISP & ISY Model Pumps)	4	\$11
2	R58.0722.30	PLUG, Filler, Polyester, Black	1	\$8
	R58.0722.40	PLUG, Filler, Polypropylene, Grey	1	\$8
	R58.0722.60	PLUG, Filler, Ryton, Brown	1	\$25
3	R58.0765.73	O-RING, Filler Plug, VITON	1	service kit
4	R58.1308.10	BODY, Rear, Stainless Steel 316	1	\$434
	R58.1361.71	O-RING, Support, BUNA-N	1	\$23
	R58.1361.72	O-RING, Support, EPDM	1	\$25
5	R58.1361.73	O-RING, Support, VITON	1	service kit
	R58.1301.30	SUPPORT, Polyester, Black	1	\$94
	R58.1301.40	SUPPORT, Polypropylene, Grey	1	\$94
6	R58.1301.60	SUPPORT, Ryton, Brown	1	\$373
	R58.071510	SCREW, 5/16"-24x125" Long SS for pumps close-coupled to engines, pedestal mounted	4	\$11
	R58.0728.10	SCREW, 5/16"-18x15" Long SS for pumps close-coupled to electric, hydraulic or pneumatic motor	4	\$2

Item	Part#	Part Description	Qty/ Pump	List price EACH
8	R58.1245.73	O-RING, Screw Plug, VITON	4	service kit
9	R58.1233.30	PLUG, Screw, Polyester, Black	4	\$9
	R58.1233.40	PLUG, Screw, Polypropylene, Grey	4	\$9
10	R58.1233.60	PLUG, Screw, Ryton, Brown	4	\$56
	R58.0718	KEY, 3/16" Sq x 15/16" Long, Steel	1	\$5
	R58.0718.10	KEY, 3/16" Sq x 15/16" Long, Stainless Steel	1	\$6
11	R58.1302.30	VOLUTE, Rear, Polyester, Black	1	\$112
	R58.1302.40	VOLUTE, Rear, Polypropylene, Grey	1	\$122
	R58.1302.60	VOLUTE, Rear, Ryton, Brown	1	\$389
12	R58.1246.73	O-RING, Segment, VITON	1	service kit
13	R58.0683.30	IMPELLER, Polyester, Black	1	\$57
	R58.0683.40	IMPELLER, Polypropylene, Grey	1	\$97
	R58.0683.60	IMPELLER, Ryton, Brown	1	\$200

Item	Part#	Part Description	Qty/ Pump	List price EACH
14	R58.0717.73	O-RING, Screw, VITON	1	Conversion Kit
15	R58.0716.10	SCREW, Impeller, 5/16"-24 x 80" Long, Stainless Steel	1	\$10
16	R58.1348.10	SCREW, Volute, #10 x 75", Stainless Steel	7	\$5
17	R58.1009.73	O-RING, Drain Plug, VITON	1	Conversion Kit
	R58.0723.30	PLUG, Drain, Polyester, Black	1	\$9
18	R58.0723.40	PLUG, Drain, Polypropylene, Grey	1	\$11
	R58.0723.60	PLUG, Drain, Ryton, Brown	1	\$18
19	R58.2012.10	BODY, Front, NPT, 316 Stainless Steel	1	\$808
	R58.2013.10	BODY, Front, BSP, 316 Stainless Steel	1	\$808
20	R58.1280.01	ASSY, Stainless Steel, V-Band with Knob	1	\$160
	R58.0778.11	SHIM, Impeller, 006", Stainless Steel		\$2
21	R58.0778.12	SHIM, Impeller, 015", Stainless Steel		\$2
	R58.0778.13	SHIM, Impeller, 030", Stainless Steel		\$2
	R58.0714.14	SHAFT SEAL, VITON, Stainless Steel, Carbon/Ceramic	1	\$194
	R58.0714.15	SHAFT SEAL, Hastelloy C, Teflon, Silicon Carbide	1	\$5,558
	R58.0714.92SG	SHAFT SEAL, Non-Metallic, ECTFE, EPDM, Graphite Loaded Silicon Carbide	1	\$1,297
22, 25 & 26	R58.0714.94SG	SHAFT SEAL, Non-Metallic, ECTFE, VITON, Graphite Loaded Silicon Carbide	1	\$1,460
	R58.46250.11	SHAFT SEAL, BUNA-N, Stainless Steel, Graphite Loaded Silicon Carbide	1	\$443
	R58.46250.12	SHAFT SEAL, EPDM, Stainless Steel, Graphite Loaded Silicon Carbide	1	\$664
	R58.46250.13	SHAFT SEAL, VITON, Stainless Steel, Graphite Loaded Silicon Carbide	1	\$824
	R58.1312.71	O-RING, Body, BUNA-N	1	\$52
23	R58.1312.72	O-RING, Body, EPDM	1	\$52
	R58.1312.73	O-RING, Body, VITON	1	Conversion Kit
24	R58.1282.90	KNOB, V-Band Clamp	1	\$54
	R58.0976.71	O-RING, Shaft Seal, BUNA-N	1	\$6
26	R58.0976.72	O-RING, Shaft Seal, EPDM	1	\$6
	R58.0976.73	O-RING, Shaft Seal, VITON	1	\$17
	R58.1872.71	CHECK VALVE, BUNA-N	1	\$66
27	R58.1872.72	CHECK VALVE, EPDM	1	\$66
	R58.1872.73	CHECK VALVE, VITON	1	Conversion Kit
28	R58.1203.73	O-RING, Rear Volute, VITON	1	Conversion Kit
	R58.1303.30	VOLUTE, Front, Flat, Polyester, Black	1	\$144
	R58.1303.40	VOLUTE, Front, Flat, Polypropylene, Grey	1	\$149
29	R58.1303.60	VOLUTE, Front, Brown, Ryton	1	\$327
	R58.1304.31	VOLUTE, Front, BUNA Lined, Polyester, Black	1	\$192
	R58.1304.32	VOLUTE, Front, EPDM Lined, Polyester, Black	1	\$192
31	R58.1014.10	ADAPTER, Shaft, 625" Dia Bore, Stainless Steel, for close-Coupled Electric or Pneumatic Motor attaches with set screws	1	\$233
	R58.1165.10	ADAPTER, Shaft, 63" Dia Bore, Stainless Steel, for Hydraulic Motor	1	\$321
32	R58.0883	SCREW, Set, 1/4"-20 x 1/4" Long, Steel:	2	\$6
35	R58.1011.20	BASE, Hydraulic Motor, Moulded Plastic	1	\$138

Item	Part#	Part Description	Qty/ Pump	List price EACH
36	R58.0729H	SCREW, 5/16"-18 x 1" Long, Plated Steel	4	\$0
37	R58.2100.10	BRACKET, for Close-Coupled Electric, Stainless Steel	1	\$144
38	R58.1826.71	PAD, Rubber, Saddle	1	\$18
39	R58.1828.90	SADDLE, Electric Motor, 6,625" Dia, Melded Plastic	1	\$49
40	R58.1846.40	BASE PLATE, Polypropylene, for close-coupling to electric motor	1	\$203
41	R58.0934.10	STRAP, Electric Motor, Stainless Steel	1	\$52
43	R58.1015.10	SCREW, Hex Cap, 3/8"-16 x 15" Long, Stainless Steel	4	\$6
44	R58.1010.20	ADAPTER, for close-coupling to 56C frame electric or pneumatic motor, melded plastic	1	\$57
45	R58.1955.71	SEAL, Lip 717" ID, BUNA-N	2	\$25
46	R58.0882.90	SHAFT SLEEVE, Polyethylene, Heat Shrinkable	1	\$5
47	R58.0884.71	SLINGER, BUNA-N	1	\$3
48	R58.1951.90	HOUSING, Bearing, Cast Metal	1	\$548
49	R58.1954.90	BEARING, Ball, 787" ID	2	\$54
50	R58.1952.10	SHAFT, Stainless Steel, 75" Diameter	1	\$316
51	R58.1953.10	PLATE, End, Stainless Steel	1	\$79
52	R58.073010	FLAT WASHER, 563", Stainless Steel	2	\$0
53	R58.072910	SCREW, 5/16"-18 x 1" Long, Stainless Steel	2	\$6
54	R58.0745.10	KEPNUT, 5/16"-18, Stainless Steel	2	\$6
57	R58.195610	SHIM, Bearing Shaft, Cast Metal Pedestal, 006" thick, Stainless Steel	as required	\$6
58	R58.2525.10	SCREW, Hex, 1/4"-20 x 3/4", Stainless Steel	4	\$9
59	R58.195001	BEARING & PEDESTAL Assy, with 3/4" Stainless Steel Shaft (includes items 45,48,49,50,51,57 & 58)	1	\$744
60	R58.0686	MOTOR, Hydraulic	1	\$888
62	R58.0926	MOTOR, Pneumatic	1	\$2,129
63	R58.0109	BASEPLATE KIT, std duty, call factory for detail for flex-coupling to elec, motors	1	\$543
64	R58.0929	BASEPLATE, for pumps close-coupled to hydraulic or pneumatic motor	1	\$187
64	R58.0009	ROLL CAGE, Standard equipment on all engine driven T pumps	1	\$427