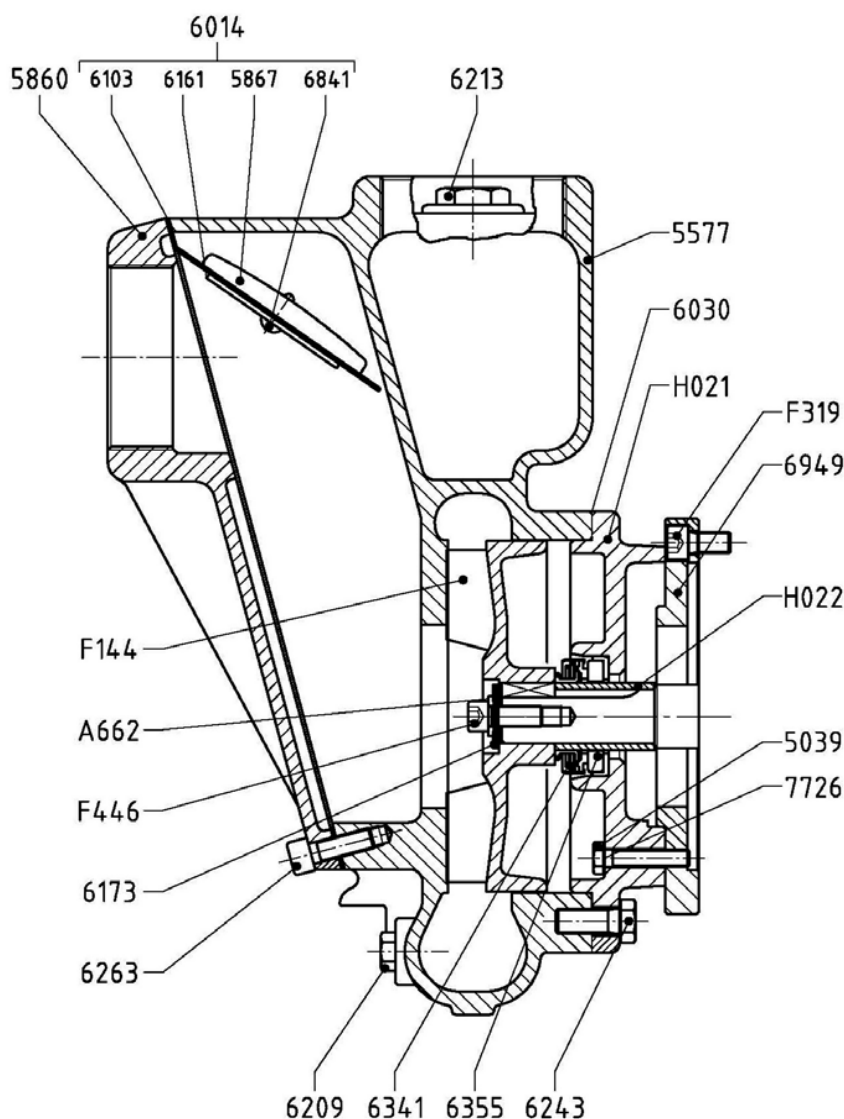




## AUSSIE SPARES DIAGRAM & PARTS LIST

AUSSIE GMP PUMPS: B3XR-A FOR CYLINDRICAL 1" SHAFT WITH KEY MOTORS  
CAT AAT9



Part Number	Qty	Description	Retail price
5039	6	Screw T.E. M 8x50	\$2
5441	2	Flex. Gasket 0.2mm	\$12
5577	1	Pump Casing B3XR-A	\$2,158
5860	1	Valve Body B3XR-A	\$415
5867	1	Counterweight B3XR-A	\$18
6030	1	Flex. Gasket B 2587	\$12
6103	1	Check Valve B 2583/1	\$78
6161	1	Washer D.7x75x2.5	\$11
6173	1	Washer 10x30x6	\$7
6209	1	Conical Tap 1/4" Gas	\$6
6213	1	Conical Tap 1" Gas	\$7
6243	4	T.E. Screw M 12x25	\$6

Part Number	Qty	Description	Retail price
6263	7	OEB Screw M 10x30	\$2
6341	1	Mech. Seal 32-54-15	\$54
6355	1	Counterface 33-57-10	\$38
6841	1	Rivet 6.5x20	\$4
6949	1	Flange	\$265
7726	6	Copper Washer	\$2
A662	1	Elastic Washer M10	\$1
F144	1	Impeller B3XR-A	\$605
F319	4	OEB Screw 3/8" -16 UNC "	\$5
F446	1	Screw OEB 3/8 -24 UNF "	\$5
H021	1	Bracket	\$820
H022	1	Sleeve D.25.4/32/H47	\$83