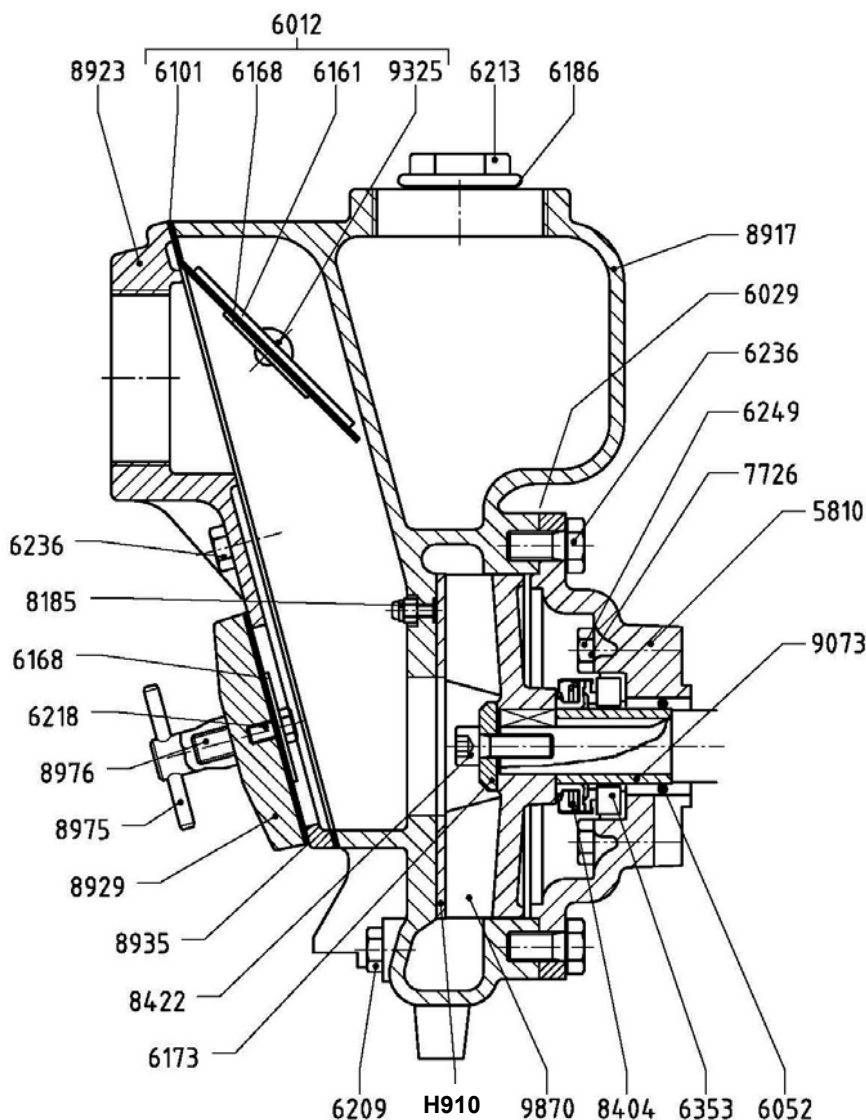




AUSSIE SPARES DIAGRAM & PARTS LIST

AUSSIE GMP PUMPS: B2KQ-A/ST FOR CYLINDRICAL 3/4" SHAFT WITH KEY MOTORS
CAT AAR7



Part Number	Qty	Description	List price
5810	1	Support B2KQ-A	\$208
6029	1	Flex. Gasket B 2618	\$8
6052	1	OR 133 (24.99x3.53)	\$13
6101	1	Check Valve 2616/2	\$26
6161	1	Washer D.7x75x2.5	\$11
6168	2	Washer B 2621/2	\$7
6169	2	Copper Washer	\$4
6173	1	Washer 10x30x6	\$7
6186	1	Flex. Washer 33x39x2	\$2
6209	1	Conical Tap 1/4" Gas	\$6
6213	1	Conical Tap 1" Gas	\$7
6218	1	Hex. Head Screw M6x12	\$2
6236	8	Hex. Head Screw M10x20	\$2
6249	4	Hex. Head Screw B 1027	\$30
6353	1	Counterface 27-50-10	\$30

Part Number	Qty	Description	List price
7726	4	Copper Washer	\$2
8185	3	Torque Nut M5 A2	\$4
8404	1	Mech. Seal 25-47-14	\$268
8422	1	Screw OEB 5/10" L=20	\$8
8917	1	Pump Body B2KQ-A/ST	\$869
8923	1	Valve B2KQ-A/ST	\$200
8929	1	Inspection Door	\$79
8935	1	Gasket Inspect. Door	\$22
H910	1	Complete Wear Disc kit	\$65
8975	2	Complete Pin M10	\$54
8976	2	Grub Screw M10x50	\$11
9073	1	Brass Sleeve	\$35
9325	1	Rivet 6x12	\$2
9870	1	Impeller B2KQ-A/ST	\$302
F159	3	Washer	\$6