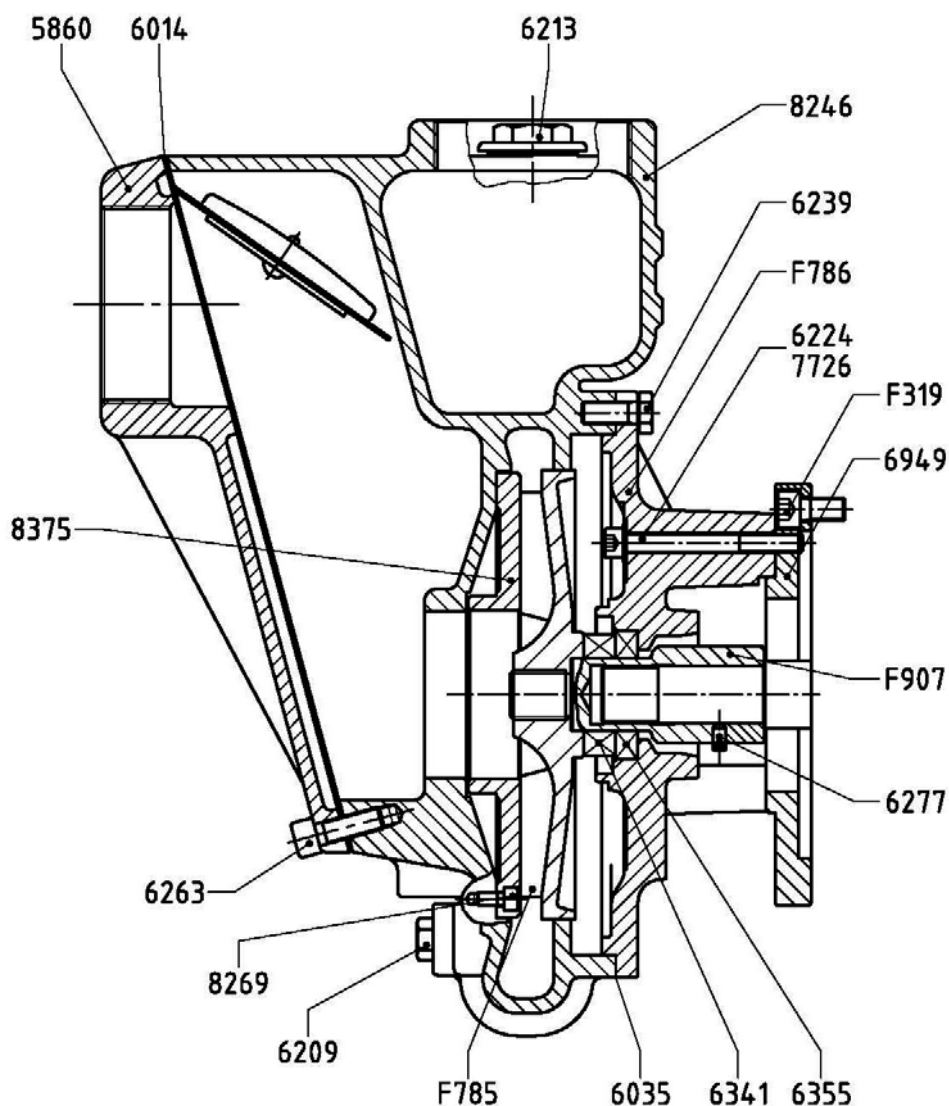




AUSSIE SPARES DIAGRAM & PARTS LIST

AUSSIE GMP PUMPS: G3TMK-A FOR GX390 P SHAFT
CAT AA8E



| Part Number | Qty | Description | Retail price |
|-------------|-----|------------------------|--------------|
| 5860 | 1 | Valve Body B3XR-A | \$415 |
| 5867 | 1 | Counterweight B3XR-A | \$18 |
| 6035 | 2 | Flex. Gasket B 1056 | \$18 |
| 6103 | 1 | Check Valve B 2583/1 | \$78 |
| 6161 | 1 | Washer D.7x75x2.5 | \$11 |
| 6209 | 1 | Conical Tap 1/4" Gas | \$6 |
| 6213 | 1 | Conical Tap 1" Gas | \$7 |
| 6224 | 6 | T.E. Screw M8x80 | \$2 |
| 6239 | 8 | Hex. Head Screw M10x25 | \$4 |
| 6263 | 7 | OEB Screw M 10x30 | \$2 |
| 6277 | 2 | Screw M6x10 | \$1 |

| Part Number | Qty | Description | Retail price |
|-------------|-----|-----------------------|--------------|
| 6341 | 1 | Mech. Seal 32-54-15 | \$54 |
| 6355 | 1 | Counterface 33-57-10 | \$38 |
| 6841 | 1 | Rivet 6.5x20 | \$4 |
| 6949 | 1 | Flange | \$265 |
| 7726 | 6 | Copper Washer | \$2 |
| 8246 | 1 | Pump Casing B-2450/1 | \$2,228 |
| 8269 | 3 | Steel OEB Screw M6x12 | \$5 |
| 8375 | 1 | Wear Disc B-2451 | \$293 |
| F785 | 1 | Impeller G3TMK-A | \$707 |
| F786 | 1 | Bracket | \$820 |
| F908 | 1 | Extension Shaft | \$799 |