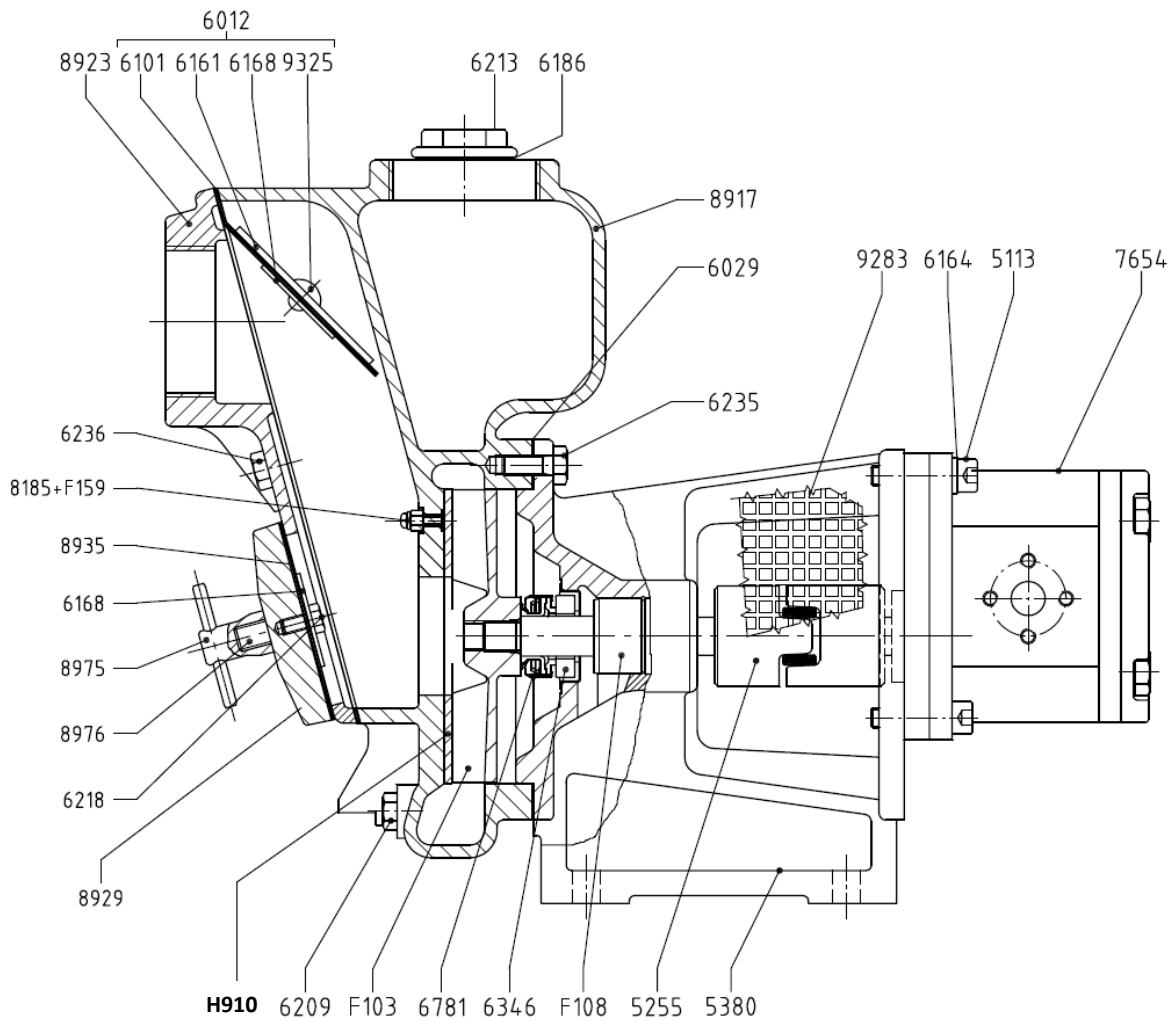




AUSSIE SPARES DIAGRAM & PARTS LIST

AUSSIE GMP PUMPS: B2KQ-A/ST HYDRAULIC MOTOR
CAT AA6U



Part Number	Qty	Description	List Price
5571	1	Pump casing B2KQ-A	\$869
6012	1	Complete check valve	\$52
6029	1	Flex. Gasket B 2618	\$8
6049	1	OR 118 (13.95x2.62)	\$1
6164	4	Washer D.8x14x2	\$1
6186	1	Flex. Washer 33x39x2	\$7
6209	1	Conical Tap 1/4" Gas	\$6
6213	1	Conical Tap 1" Gas	\$7
6235	4	T.E. Screw M 10x18	\$2
6255	4	TCEI Screw M 8 x 25	\$2
6346	1	Counterface S 5645	\$31
6752	4	TC Screw M4 x 8	
6781	1	Mech. Seal 16-32-13	\$196
8923	1	Valve B2KQ-A/ST	\$200
8929	1	Inspection Door	\$79
8935	1	Gasket Inspect. Door	\$22
8975	2	Complete Pin M10	\$54
8976	2	Grub Screw M10x50	\$11

Part Number	Qty	Description	List Price
9283	2	Protecting Network	\$11
9325	1	Rivet 6x12	\$2
F103	1	Impeller B2KQA/ST 2HP	\$302
F108	1	Shaft with Bearing	\$199
F407	1	Complete pump body	
H910	1	Complete stainless Steel Wear Disc	\$65
H796	3	Screw M5 x 10	\$4
P079	4	Screw M10 x 20	\$3
P162	2	Grub Screw M10 x 45	\$11
P322	1	Complete Support	Poa
P736	1	Hydraulic motor	\$1,726

REJUVENATION KIT ... SAVE ON BUYING INDIVIDUAL PARTS			
GSKIT-B2KQ-A/STH		Includes check valve, mech seal, counterface, filling cap & trash port gaskets (components highlighted in yellow)	\$224