



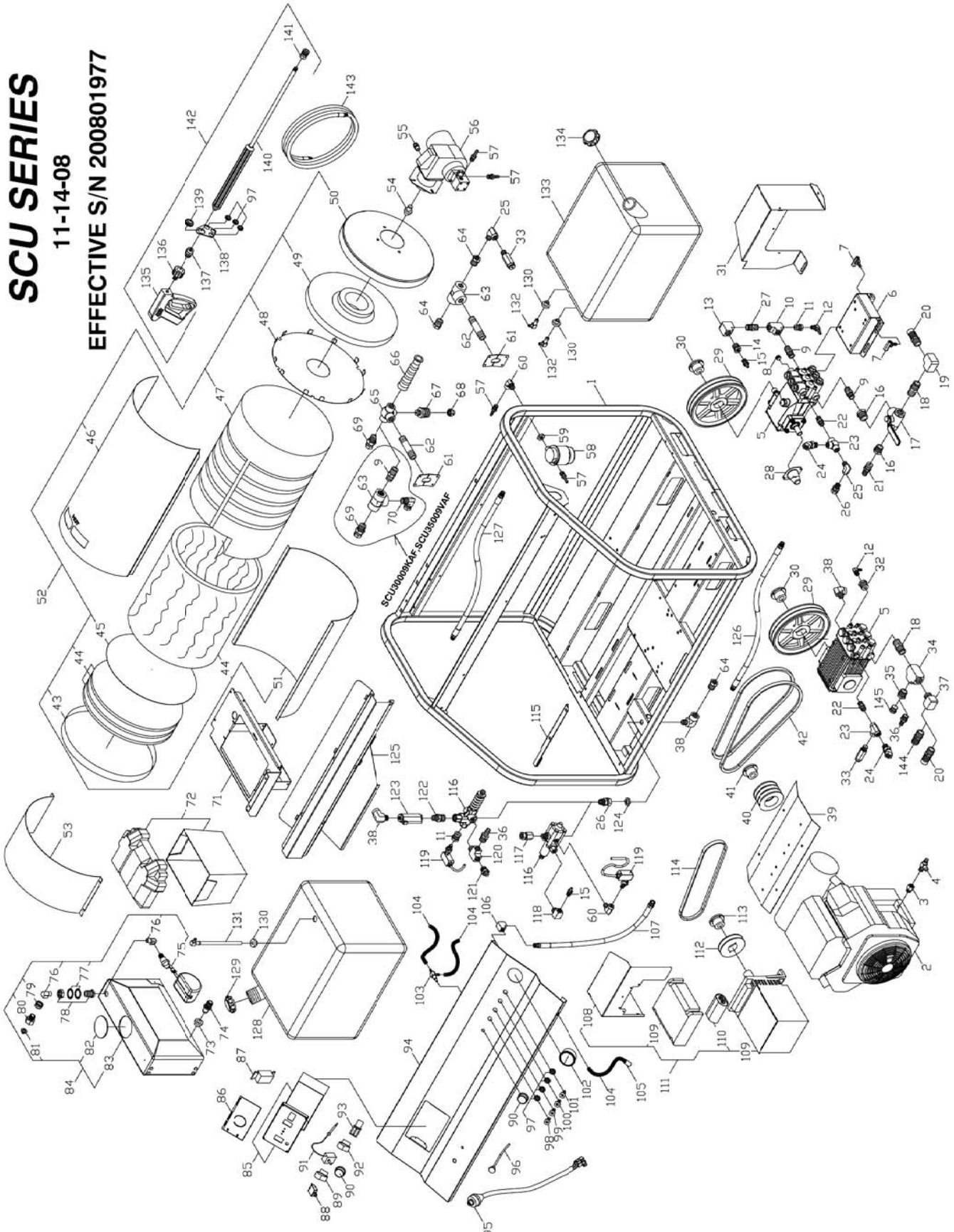
AUSSIE SPARES DIAGRAM & PARTS LIST

AUSSIE HYDROTEK SCU SERIES

SCU SERIES

11-14-08

EFFECTIVE S/N 200801977



Summary of pumps used by Australian Pump:

| Model | Pump manufacturer | Pump model |
|------------|-------------------|------------|
| HSCU51006V | General pump | TSP1821 |





AUSSIE SPARES DIAGRAM & PARTS LIST

AUSSIE HYDROTEK SCU SERIES

SCU SERIES PARTS LIST

| | | | |
|----|-------|--|---|
| 1 | HSC14 | SCU FRAME 14 STAINLESS (2008) | ALL |
| 2 | MS150 | ENGINE GAS 16HP VANGAURD E/S W/MUFFLER | SCU33005V |
| | MK200 | ENGINE 20HP KOHLER CS W/MUFFLER | SCU35005KQ |
| | MH240 | ENGINE 24HP HONDA E/S W/MUFFLER | SCU35006HQ |
| | MS210 | ENGINE GAS 21HP VANGAURD E/S W/MUFFLER | SCU35006VQ |
| | MK250 | ENGINE 25HP KOHLER W/MUFFLER | SCU30009KAF |
| | MS290 | ENGINE GAS 29HP VANGAURD E/S W/MUFFLER | SCU35009VAF |
| 3 | D4060 | MALE ADAPTER 3/8 BRASS | SCU35005KQ,SCU30009KAF |
| 4 | MS006 | OIL DRAIN VALVE 3/8 | SCU33005V,SCU35005KQ,SCU35006VQ,SCU30009KAF |
| | MS007 | OIL DRAIN VALVE 14mm | SCU35006HQ,SCU35009VAF |
| 5 | P4535 | PUMP 5CP3120 4.5 @ 3500 20mm | SCU33005V,SCU35005KQ |
| | PG563 | PUMP 5.6/3500 NICKEL PLATED MA | SCU35006VQ,SCU35006HQ |
| | PG585 | PUMP TSF2021 23600 @ 8.5 GPM | SCU30009KAF,SCU35009VAF |
| 6 | HSC40 | PUMP RAIL ASSEM. SCU-2008 MODELS | ALL |
| 7 | HPR60 | PUMP RAIL BOLT | ALL |
| 8 | D1061 | PLUG 3/8 FLUSH HEAD HEX STEEL | SCU33005V,SCU35005KQ |
| 9 | D2088 | NIPPLE 1/2" BRASS | SCU33005V,SCU35005KQ,SCU35006VQ,SCU35006HQ |
| 10 | D6088 | TEE 1/2" BRASS | SCU33005V,SCU35005KQ,SCU35006VQ,SCU35006HQ |
| 11 | D1084 | BUSHING 1/2 x 1/4 BRASS | SCU33005V,SCU35005KQ,SCU35006VQ,SCU35006HQ |
| 12 | D8040 | HOSE BARB 1/4 90 ELBOW* | ALL |
| 13 | D5088 | ELL 1/2 BRASS | SCU33005V,SCU35005KQ |
| | D5588 | STREET ELL 1/2 BRASS* | SCU35006VQ,SCU35006HQ |
| 14 | D1086 | BUSHING 1/2 x 3/8 BRASS | SCU33005V,SCU35005KQ,SCU35006VQ,SCU35006HQ |
| 15 | D6062 | HOSE BARB , PUSH LOCK 3/8H x 3/8 | SCU33005V,SCU35005KQ,SCU35006VQ,SCU35006HQ |
| 16 | D1128 | BUSHING 3/4 x 1/2 BRASS | ALL |
| 17 | VVB38 | BALL VALVE 3/4" 3 WAY | SCU33005V,SCU35005KQ,SCU35006VQ,SCU35006HQ |
| 18 | D2089 | NIPPLE 3/4" BRASS | ALL |
| 19 | D7512 | ELL 3/4" BRASS | SCU33005V,SCU35005KQ,SCU35006VQ,SCU35006HQ |
| 20 | DJ033 | ORIFICED BARB .339 3/4NPT x 1"H BARB W/NYLON ORIFICE | SCU33005V |
| | DJ037 | ORIFICED BARB .375 3/4NPT x 1"H BARB W/NYLON ORIFICE | SCU35005KQ |
| | DJ035 | ORIFICED BARB .359 3/4NPT x 1"H BARB W/NYLON ORIFICE | SCU35006VQ |
| | DJ040 | ORIFICED BARB .406 3/4NPT x 1"H BARB W/NYLON ORIFICE | SCU35006HQ |
| | DJ045 | ORIFICED BARB .453 3/4NPT x 1"H BARB W/NYLON ORIFICE | SCU30009KAF,SCU35009VAF FOR INLET SOAP FUNCTION |
| 21 | D8076 | HOSE BARB 5/8H x 1/2M .339id PNK | SCU33005V |
| | D8077 | HOSE BARB 5/8H x 1/2M .406id RED | SCU35005KQ,SCU35006VQ,SCU35006HQ |
| 22 | DB506 | NIPPLE 3/8 STEEL | ALL |
| 23 | DE066 | TEE 3/8 STEEL | ALL |
| 24 | DE606 | SWIVEL 45 3/8M x 3/8F STEEL | ALL |
| 25 | DC568 | STREET ELL 3/8 STEEL | SCU35006VQ,SCU35006HQ |
| | DE866 | SWIVEL 3/8F x 3/8M 90 BRAZED | SCU33005V,SCU35005KQ |
| 26 | DE566 | SWIVEL 3/8 STEEL | SCU35006VQ,SCU35006HQ |
| 27 | D2088 | NIPPLE 1/2" BRASS | SCU33005V,SCU35005KQ |
| 28 | PP692 | SHAFT PROTECTOR 5 FRAME BD PMP | SCU33005V,SCU35005KQ |
| 29 | KU080 | SHEAVE 2BK80H | SCU33005V |
| | KU090 | SHEAVE 2BK90H | SCU35005KQ,SCU35006VQ,SCU35006HQ |
| | KV090 | SHEAVE 3BK90H | SCU30009KAF,SCU35009VAF |
| 30 | KSH17 | BUSHING H20mm | SCU33005V,SCU35005KQ |
| | KSH19 | BUSHING H24mm | SCU35006VQ,SCU35006HQ,SC30009KAF,SCU35009VAF |
| 31 | HSC46 | PUMP BELT GUARD SCU-WITH 5CP PUMPS | SCU33005V,SCU35005KQ |
| | HSC42 | PUMP BELT GUARD SCU HIGH FLOW UNITS | SCU35006VQ,SCU35006HQ,SC30009KAF,SCU35009VAF |
| 32 | D1127 | BUSHING 3/4M x 1/4F BRASS | SCU30009KAF,SCU35009VAF |
| 33 | UP137 | PRESSURE RELIEF 3700psi BLACK | SCU33005V,SCU30009KAF |
| | UP045 | PRESSURE RELIEF 4500+15% 500q | SCU35005KQ,SCU35006VQ,SCU35006HQ,SCU35009VAF |
| 34 | D6120 | TEE 3/4" BRASS (NOT POTTED) | SCU30009KAF,SCU35009VAF |
| 35 | D1128 | BUSHING 3/4 x 1/2 BRASS | SCU30009KAF,SCU35009VAF |
| 36 | D8088 | HOSE BARB 1/2" BRASS* | SCU30009KAF,SCU35009VAF FOR INLET SOAP FUNCTION |
| 37 | D5512 | STREET ELBOW 3/4" BRASS | SCU30009KAF,SCU35009VAF |
| 38 | DE586 | STREET ELL 1/2F X 3/8m steel | SCU30009KAF,SCU35009VAF |
| 39 | HSC47 | MUFFLER HEAT SHEILD SCU | SCU33005V,SCU35005KQ,SCU35006VQ,SCU30009KAF |
| | HS039 | MUFFLER HEAT SHEILD , 20 HONDA 8/98JR | SCU35009VAF |
| 40 | KV036 | SHEAVE 3BK36 x 1" | SCU35006HQ |
| | KV038 | SHEAVE 3TB38 | SCU33005V |
| | KV046 | SHEAVE 3TB46 | SCU35006VQ, |
| | KV054 | SHEAVE 4TB42 | SCU35005KQ,SCU35006HQ |
| 41 | KSP16 | BUSHING P1 x 1 | SCU30009KAF,SCU35009VAF |
| | KSP18 | BUSHING P1 x 1 1/8 | SCU33005V,SCU35005KQ,SCU35006VQ, |
| | KSP23 | BUSHING P1 x 1 7/16 | SCU35006HQ,SCU35009VAF |
| 42 | KSB42 | BELT BX42 | SCU30009KAF |
| | KSB44 | BELT BX44 | SCU33005V, |
| | KSB45 | BELT BX45 | SCU35005KQ |
| 43 | B0028 | COIL CAP FLAT SC 18" NO HOLE | SCU35006VQ,SCU35005HQ,SCU30009KAF,SCU35009VAF |
| 44 | BN053 | INSUL BLKT 50SQ' 1/2 x 24 8#25' | ALL |
| 45 | BN112 | INSUL DISC RETAINER 18" SC FLAT END CAP | ALL |
| 46 | B2315 | COIL WRAP TOP W/RG 36in ASM 8/98JR | ALL |
| 47 | BC480 | COIL; 4PK SCH 80 18" | ALL |
| 48 | BN111 | INSULATION DISC RETAINER 4in HOLE | ALL |
| 49 | BN054 | INSULATION HEAD 18" (TOP HAT) | ALL |
| 50 | B0013 | COIL CAP ASM 18in 4.5id GRAINE 8/98JR | ALL |
| 51 | B2323 | COIL WRAP BOTTOM ASM 12/98BL | ALL |
| 52 | BC491 | COIL ASM 4PK SCH80 SCU (2008) | ALL |
| 53 | HSC19 | BATTERY RAIN GUARD-SCU (2008) | ALL |
| 54 | BZ300 | FUEL NOZZLE 3.0 90B | SCU33005V,SCU35005KQ, |
| | BZ350 | FUEL NOZZLE 3.5 90B | SCU35006VQ,SCU35006HQ, |
| | BZ400 | FUEL NOZZLE 4.0 90B | SCU30009KAF,SCU35009VAF |
| 55 | EW008 | STRAIN RELIEF 1/2 HEYCO (3/8) | ALL |
| 56 | BU007 | BURNER; WAYNE 110v CAP 2-4 | ALL |
| 57 | D8044 | BARB; HOSE; 1/4; BRASS* .312 t | ALL |
| 58 | BF020 | FUEL FILTER; RACOR HYDRO TEK | ALL |
| 59 | D7064 | HEX NUT 1/4 BRASS | ALL |
| 60 | DC043 | STREET ELL 1/4 STEEL | ALL |
| 61 | B2324 | COIL NIPPLE RETAINER 1/2in 12/98BL | ALL |
| 62 | BC855 | BURNER NIPPLE; 1/2 x 5.5 SCH80* | ALL |
| 63 | DE088 | TEE 1/2 STEEL A105 FORGED | ALL |
| 64 | DA086 | BUSHING 1/2 x 3/8 STEEL | ALL |
| 65 | DE08S | TEE 1/2in-SPECIAL 3/8 TAP | ALL |
| 66 | ECH75 | HEAVY DUTY BEND RESTICTOR-B | ALL |
| 67 | UPB05 | ADAPTER FITTING-BURST DISC*** | ALL |
| 68 | UPB80 | BURST DISC 8000psi TORQUE 32-4 | ALL |



AUSSIE SPARES DIAGRAM & PARTS LIST

AUSSIE HYDROTEK SCU SERIES

11-14-08 EFFECTIVE S/N 200801977

| | | | |
|-----|-------|---|---|
| 69 | DE568 | SWIVEL 3/8F x 1/2M STEEL | ALL |
| 70 | DE869 | SWIVEL 3/8FS x 1/2M 90 STEEL | SCU30009KAF, SCU35009VAF |
| 71 | HB024 | BATTERY BOX TRAY SCU (2008) | ALL |
| 72 | HB100 | BATTERY BOX ATWOOD G24 (LARGE) | ALL |
| 73 | DFF10 | WATER TANK BUSHING 5/8 | ALL |
| 74 | DOF10 | DISCONNECT BARB/TANK FITTING | SCU33005V, SCU35005KQ, SCU35006VQ, SCU35006HQ |
| 75 | VVF08 | FLOAT VALVE 3/8 BRASS | SCU33005V, SCU35005KQ, SCU35006VQ, SCU35006HQ |
| 76 | D5566 | STREET ELL 3/8 BRASS | SCU33005V, SCU35005KQ, SCU35006VQ, SCU35006HQ |
| 77 | FW700 | WASHER LOCK 1 in GALV*** | SCU33005V, SCU35005KQ, SCU35006VQ, SCU35006HQ |
| 78 | D7520 | PANEL FITTING 3/4 BRASS | SCU33005V, SCU35005KQ, SCU35006VQ, SCU35006HQ |
| 79 | D0010 | SPRING GARDEN H A | SCU33005V, SCU35005KQ, SCU35006VQ, SCU35006HQ |
| 80 | D006M | GARDEN H A 3/8 NPT MALE | SCU33005V, SCU35005KQ, SCU35006VQ, SCU35006HQ |
| 81 | D0021 | SCREEN WASHER GARDEN H A | SCU33005V, SCU35005KQ, SCU35006VQ, SCU35006HQ |
| 82 | HL017 | TANK CAP 4in W/HOLE | SCU33005V, SCU35005KQ, SCU35006VQ, SCU35006HQ |
| 83 | WT040 | TANK ; FLOAT 4 GAL HD LINEAR | SCU33005V, SCU35005KQ, SCU35006VQ, SCU35006HQ |
| 84 | WT046 | FLOAT TANK ASM W/VALVE/FILTER | SCU33005V, SCU35005KQ, SCU35006VQ, SCU35006HQ |
| | WT0SC | OPTIONAL SC ANTIFREEZE TANK | SCU30009KAF, SCU35009VAF |
| 85 | HSC51 | LASER CUT SC BOX ASM/TOP AND BOTTOM | ALL |
| 86 | GLL57 | LABEL; SC/SS PANEL CONTROL BOX*** | ALL |
| 87 | EP154 | GFCI DUPLEX RECEPTACLE 20 AMP | ALL |
| 88 | ECF10 | CIRCUIT BREAKER 15 AMP* | ALL |
| 89 | EC410 | ROCKER SWITCH 110V RED SPST | ALL |
| 90 | ECH70 | KNOB; BLUE .25id x 1.5od | ALL |
| 91 | ECH50 | THERMOSTAT; 60-250 1 GP PART=25 | SCU33005V, SCU35005KQ, SCU35006VQ, SCU35006HQ |
| | ECH55 | THERMOSTAT; 60-190F*** | SCU30009KAF, SCU35009VAF |
| 92 | EC411 | ROCKER SWITCH 110V CLEAR SPST | ALL |
| 93 | EM601 | HOOR METER 110V | ALL |
| 94 | HSC38 | SCU CONTROL PANEL, EZ ACCESS (2008) | ALL |
| 95 | ESS08 | WIRE HARNESS 25HP KOHLER SC | SCU35005KQ, SCU30009KAF |
| 96 | HL216 | CHOKE CABLE 6' | SCU35005KQ, SCU30009KAF |
| 97 | HLB09 | GROMET NOZZLE HOLDER*** | ALL |
| 98 | NQ500 | NOZZLE/QDC 05 x 0" | SCU33005V, SCU35005KQ, SCU30009KAF |
| | NQ550 | NOZZLE/QDC 055 x 0" | SCU35006VQ |
| | NQ600 | NOZZLE/QDC 06 x 0 | SCU35006HQ |
| | NQ450 | NOZZLE/QDC 045 x 0 | SCU35006VAF |
| 99 | NQ502 | NOZZLE/QDC 05 x 15 | SCU33005V, SCU35005KQ, SCU30009KAF |
| | NQ552 | NOZZLE/QDC 055 x 15 | SCU35006VQ |
| | NQ602 | NOZZLE/QDC 06 x 15 | SCU35006HQ |
| | NQ452 | NOZZLE/QDC 045 x 15 | SCU35009VAF |
| 100 | NQ504 | NOZZLE/QDC 05 x 40 | SCU33005V, SCU35005KQ, SCU30009KAF |
| | NQ554 | NOZZLE/QDC 055 x 40 | SCU35006VQ |
| | NQ604 | NOZZLE/QDC 06 x 40 | SCU35006HQ |
| | NQ454 | NOZZLE/QDC 045 x 40 | SCU35009VAF |
| 101 | NQ453 | NOZZLE/QDC 045 x 25 | SCU33005V, SCU35005KQ, SCU35006VQ |
| | NQ553 | NOZZLE/QDC 05 x 25 | SCU35006HQ |
| 102 | UG055 | GAUGE; 5000psi DUAL SCALE; PN | ALL |
| 103 | VVC10 | CHEMICAL MET VALVE MV-100 MOD | ALL |
| 104 | DHB04 | TUBING; CLEAR BRAIDED; 1/4 | ALL |
| 105 | VF045 | STRAINER CHEMICAL W/CHECK | ALL |
| 106 | D5044 | ELL 1/4 BRASS* | ALL |
| 107 | DH128 | HOSE 1/4 x 26" 5000psi HN GAUGE HN MODULE GAUGE HOSE | ALL |
| 108 | HSC20 | GENERATOR BELT GUARD SCU | ALL |
| 109 | MB020 | GENERATOR 2500w LSA321L10 | ALL |
| 110 | MB025 | CAPACITOR, GENERATOR 15MFD | ALL |
| 111 | MB052 | SCU GENERATOR ASSEMBLY (2008) | ALL |
| 112 | KT045 | SHEAVE BK45H | SCU35005KQ, SCU30009KAF, SCU35009VAF |
| | KT034 | SHEAVE BK34H | SCU33005V, SCU35006VQ |
| | KT040 | SHEAVE BK40H | SCU35006HQ |
| 113 | KSH19 | BUSHING H24mm | ALL |
| 114 | KSB34 | BELT BX34 | SCU33005V |
| | KSB36 | BELT BX36 | SCU35006VQ |
| | KSB38 | BELT BX38 | SCU35006HQ, SCU30008KAF, SCU35009VAF |
| | KSB4X | BELT BX40 | SCU35005KQ |
| 115 | HPR57 | ADJUSTER BRKT ASM-GENERATOR SCU | ALL |
| 116 | UU371 | UNLOADER 3-5 @ 3500 K7-1 | SCU33005V, SCU35005KQ, |
| | UU375 | UNLOADER K7-2 W/ BYPASS #1 | SCU35006VQ, SCU35006HQ |
| | UU320 | UNLOADER/REGULAR 4000 @ 21 GREEN SPRING | SCU30009KAF, SCU35009VAF |
| 117 | DE867 | SWIVEL 3/8FP x 3/8FPS | SCU33005V, SCU35005KQ, SCU35006VQ, SCU35006HQ |
| 118 | D5566 | STREET ELL 3/8 BRASS | SCU33005V, SCU35005KQ, SCU35006VQ, SCU35006HQ |
| 119 | V5030 | PRESSURE SWITCH 4000 1/4" PR16 | ALL |
| 120 | D6588 | STREET TEE 1/2" BRASS* | SCU30009KAF, SCU35009VAF |
| 121 | UPT46 | THERM DUMP VALVE 145F 1/2MPT | SCU30009KAF, SCU35009VAF |
| 122 | DB507 | NIPPLE 3/8 x 1/2 STEEL | SCU30009KAF, SCU35009VAF |
| 123 | V5005 | FLOW SWITCH 8 @ 4200 ST5 | ALL |
| 124 | D7061 | HEX NUT 3/8 BRASS-REMOTE UNLOADER | ALL |
| 125 | HSC21 | FUEL TANK HEAT SHIELD-SCU | ALL |
| 126 | DH034 | HOSE 3/8 x 34in 5000psi NO WIP | SCU33005V, SCU35005KQ, SCU35006VQ, SCU35006HQ |
| | DH049 | HOSE 1/2 x 50in 3500psi NO WIP | SCU30009KAF, SCU35009VAF |
| 127 | DH007 | HOSE 3/8 x 48in 5000psi | SCU33005V, SCU35005KQ, SCU35006VQ, SCU35006HQ |
| | DH046 | HOSE 1/2 x 46IN 3500psi NO WIP | SCU30009KAF, SCU35009VAF |
| 128 | WT08R | FUEL TANK 18 GAL GAS RED | ALL |
| 129 | WT081 | FUEL CAP; GASOLINE | ALL |
| 130 | DFF04 | FUEL TANK BUSHING 1/4 | ALL |
| 131 | DF599 | FUEL TANK ADAPTER W/PLASTIC TUBE | ALL |
| 132 | DFF04 | FUEL TANK ELL 1/4 | ALL |
| 133 | WT078 | FUEL TANK 18 GAL DIESEL CLEAR* | ALL |
| 134 | WT080 | FUEL CAP; DIESEL | ALL |
| 135 | VG200 | TRIGGER GUN, INSULATED 4000psi | ALL |
| 136 | DO74T | M22 TWIST COUPLER 1/4" MALE | ALL |
| 137 | DO74F | TWIST COUPLER 1/4 PLUG FEM-sut | ALL |
| 138 | HNZ05 | NOZZLE HOLDER (FOR WAND) | ALL |
| 139 | HLB30 | GROMET ; NOZZLE HOLDER*** | ALL |
| 140 | VW045 | WAND 1/4 x 48in MOLDED GRIP | ALL |
| 141 | DQ04S | COUPLER 1/4 SOCK FEM | ALL |
| 142 | AVGH3 | WAND 48" MOLDED NOZZLE HOLDER 3)NOZZLE HOLDER W/GROMETS | ALL |
| 143 | DH060 | HOSE 3/8 x 50' 5000psi BLU/GRY 25 | ALL |
| 144 | D8169 | HOSE BARB 1 IN H X 3/4 P BRASS | SCU30009KAF, SCU35009VAF |
| 145 | D1080 | PLUG 1/2" BRASS | SCU30009KAF, SCU35009VAF |