

Aussie QP Self Priming Service Guide

Rejuvenation of an Aussie Mr T Twin Impeller

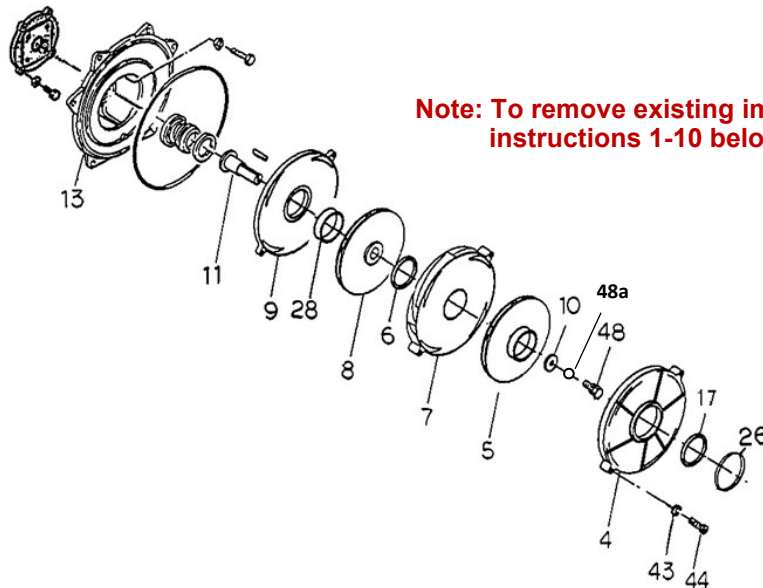
**BE PREPARED FOR FIRE SEASON ...
WHEN DID YOU CHECK YOUR SEALS LAST?**

Replacing Check Valve

1. Unscrew suction cover bolts and remove the suction cover.
2. Remove old and insert new check valve ensuring that flat surface is placed against the suction cover and that hinge is on the top.
3. Re-install the suction cover ensuring larger internal lip is at the bottom. (Torque: 12-15 Nm)



Replacing Impeller/Volute Assembly



Note: To remove existing impeller volute set, follow instructions 1-10 below in reverse first.

Note: if replacing an open/closed impeller pairing with the new closed/closed impeller pairing, the full volute assembly must also be replaced
(part number Q7207-990510 IMPELLER/VOLUTE SET contains No.4, 5, 6, 7, 8, 9, 10 26, 28, 43, 44, 48, 48a)

1. Insert LINER RING (NO 28) onto VOLUTE CASING (NO 9)
2. Install VOLUTE CASING 3 (No. 9) to Casing Cover
3. Insert IMPELLER 2 (No.8) to PUMP SHAFT (No.11).
4. Insert LINER RING 2 (No.6) into VOLUTE CASING 2 (No.7)
5. Set VOLUTE CASING 2 (No.7) to VOLUTE CASING 3 (No.9) .
6. Insert IMPELLER (No.5) in PUMP SHAFT (No.11).



Replacing Check Valve.....	1
Replacing Impeller/Volute kit.....	1
Replacing Back plate & Mech Seal.....	2
Parts breakdown.....	3
Troubleshooting guide	4

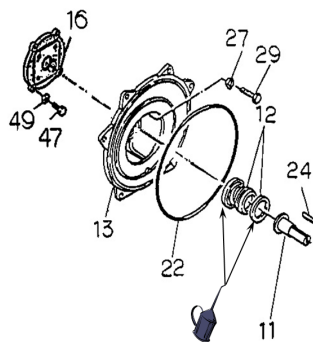
Aussie QP Self Priming Service Guide

Rejuvenation of an Aussie Mr T Twin Impeller

April 2023

7. Fix Impeller with IMPELLER WASHER (No.10), SPRING WASHER (No.48a) and BOLT (No.48) .(Torque:16-20 Nm (M8)). Use Threebond 1303N sealant or equivalent.
8. Insert LINER RING 3 (No.17) onto VOLUTE CASING (No.4) .
9. Set VOLUTE CASING (No.4) to VOLUTE CASING 2 (No.7). Fix Volute casing with two SEAL WASHERS(No.43) / BOLTS (No.44). (Torque: 5 Nm)
10. Attach O-RING (No.26) to VOLUTE CASING .

Installing back plate and mechanical seal



Note: To remove existing back plate or mechanical seal, follow instructions 1-8 below in reverse first.

1. Set the CASING COVER SET PLATE(No.16) on to the Engine-Flange. Fix with four SEAL WASHERS (NO.49) / BOLTS (No.47). (Torque: 28-33 Nm)
2. Fix the CASING COVER (No.13) to the CASING COVER SET PLATE(No.16) with four SEAL WASHERS (No.27) / BOLTS (No.29) (Torque:16-20 Nm)
3. Insert MECHANICAL SEAL (Stationary No.12) into Casing Cover. Use silicon spray to ease it in.
4. Insert MECHANICAL SEAL(Rotary No.12) into PUMP SHAFT(No.11)
5. Install (screw in) PUMP SHAFT (No.11) to Engine Shaft.
6. Insert KEY (Item No.24) onto PUMP SHAFT. (No.11)
7. Attach O-RING (No.22) to CASING COVER (No.13)
8. Replace impeller/volute and front casing as covered earlier.

Rejuvenation Kit / O-ring replacement

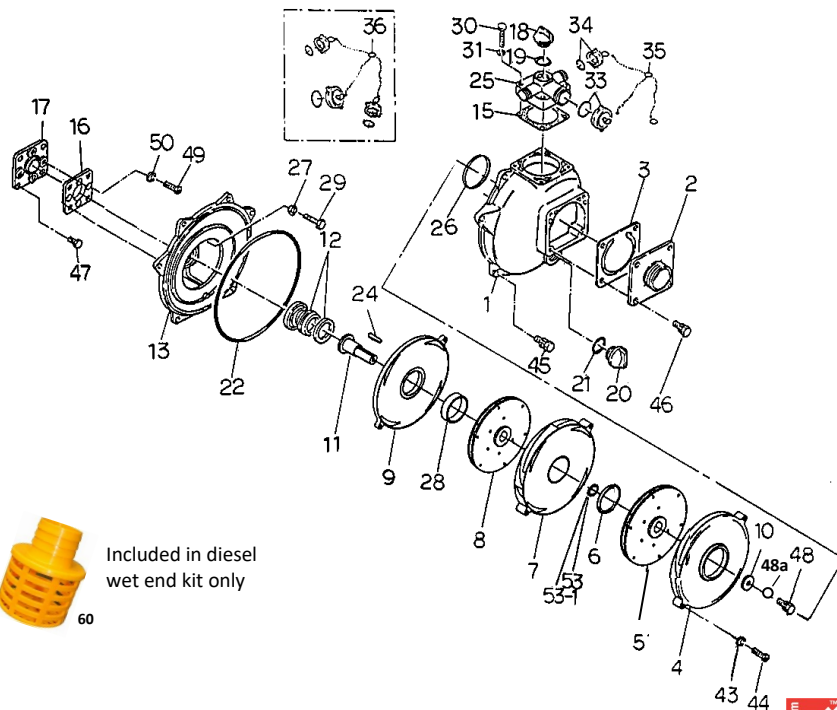
Use above instructions to remove casing, volute & impeller to expose the o-ring, liner rings and mechanical seals. Kit contents vary by pump model and in some cases contain extra adjustable liners to make the kit suit more than one model.



Renew or upgrade your pump with an Aussie Wet End Kit
only **\$1,906**
(p/n: QPT205SLTKIT (petrol)
QPT205SLTDKIT (diesel))
1" shaft only



QPT-205SLT (Aussie Mr T) with a 1" threaded shaft
(call for diesel version breakdown)



Included in diesel
wet end kit only

Pos	Kit	Part number	Description	Qty req	List price (each)
1		Q7304-100010	CASING WITH LOGO	1	\$371
2		Q1803-100160	2" SUCTION COVER	1	\$96
2		Q4328-100160	3" SUCTION COVER	1	\$115
3		Q1378-350350	CHECK VALVE	1	\$94
4	IV	Q7207-060130	VOLUTE CASING	1	\$310
5	IV	Q7207-060040	IMPELLER - 2	1	\$261
6	IV, W, P	Q1878-081290	LINER RING - 2	1	\$153
7	IV	Q7207-060110	VOLUTE CASING - 2	1	\$279
8	IV	Q7207-060030	IMPELLER	1	\$503
9	IV	Q7207-060120	VOLUTE CASING - 3	1	\$245
10	IV	Q7207-251240	IMPELLER WASHER	1	\$32
11		Q1878-221010	PUMP SHAFT (w shaft)	1	\$216
11		Q1882-221010	PUMP SHAFT (1" p shaft)	1	\$216
12	W	Q080611-3325	MECHANICAL SEAL (w shaft)	1	\$405
12	P	Q080311-2930	MECHANICAL SEAL (1" p shaft)	1	\$405
13		Q4359-100020	MOUNTING FLANGE (w shaft)	1	\$289
13		Q1988-100020	MOUNTING FLANGE (1" p shaft)	1	\$300
14		Q1867-214010	FRAME (w shaft)	1	\$300
14		Q1977-214011	FRAME (1" p shaft)	1	\$300
15	O, P, W	Q1803-330360	DELIVERY COVER PACKING	1	\$21
16		Q1369-000600	CASING COVER SET PLATE -A (w shaft)	1	\$171
16		Q4357-000600	CASING COVER SET PLATE (1" p shaft)	1	\$172
17		Q7207-081300	Liner Ring (brass)	1	\$281
18		Q063121-1100ASS	PRIMING CAP WITH O-RING	1	\$27
19	O,P	Q048035-0300	O-RING (PRIMING CAP)	1	\$8
20		Q063121-1100ASS	DRAIN CAP WITH O-RING	1	\$27
21	O,W	Q048035-0300	O-RING (DRAIN CAP)	1	\$8
22	O,P,W	Q048935-2550	O-RING (CASING)	1	\$38
23		Q072330-2040	CUSHION RUBBER	4	\$25
24		Q051004-0443	KEY	1	\$20
25		Q1814-100090	DELIVERY COVER (3 WAY OUTLET)	1	\$111
25a		Q1803-000090	2" DELIVERY ELBOW	1	\$104
25a		Q4328-100090	3" DELIVERY ELBOW	1	\$171
26	O,P,W,IV	Q048220-0750	O-RING (VOLUTE CASING)	1	\$19
27		Q045822-0080	SEAL WASHER	4	\$8
28	O,P,W,IV	Q1803-521220	LINER RING (plastic)	1	\$51
29		Q010505-0820	BOLT	4	\$3
30		Q010505-0845	BOLT	4	\$3
31		Q045125-0080	SPRING WASHER	4	\$3
32		Q010606-0850	BOLT	1	\$3
36		QCAPS&CHAINS	BALL CHAIN WITH CAP	1	\$104

Purchase a kit and **SAVE up to 30%**
on buying individual parts

Replacement Kits

KIT	Part number	Description	Positions	List Price
O	Q2055-ORKT	O RING KIT	15, 19, 21, 22, 26, 28,	\$79
P	QT205SLTREJ-2	REJUVENATION KIT (1" p shaft)	6, 12, 15, 19, 22, 26, 28	\$359
W	QT205SLTWREJ-2	REJUVENATION KIT (w shaft)	6, 12, 15, 21, 22, 26, 28	\$359
IV	Q7207-990520	IMPELLER/VOLUTE SET	4, 5, 6, 7, 8, 9, 10 26, 28, 43, 44, 48, 48a	\$1,258

Pos	Kit	Part number	Description	Qty req	List price (each)
37		Q045128-0080	SPRING WASHER	1	\$3
38		Q020546-0080	NUT	1	\$3
39		Q020545-0100	NUT	8	\$3
40		Q020545-0100	NUT	4	\$3
41		Q045128-0100	SPRING WASHER	4	\$3
42		Q045128-0100	SPRING WASHER	8	\$3
43	IV	Q045129-0060	SPRING WASHER	2	\$3
44	IV	Q010509-0640	BOLT	2	\$3
45		Q018105-0825	BOLT SET WITH SPRING WASHER (M8 x 25)	6	\$3
46		Q018105-0825	BOLT SET WITH SPRING WASHER (M8 x 25)	4	\$3
47		Q018105-0820	BOLT SET WITH SPRING WASHER	4	\$6
48	IV	Q010809-0820	SS BOLT M8 Hi Tension 20mm	1	\$13
48a	IV	Q045129-0080	SPRING WASHER	1	\$5
49		Q014105-0815	SCREW	4	\$3
50		Q045125-0080	SPRING WASHER	4	\$3
51		Q010606-1045	BOLT	4	\$3
52		Q1867-214020	ENGINE BASE (w shaft)	1	\$246
52		Q1988-214021	ENGINE BASE (1" p shaft)	1	\$296
54		Q019116-0625	BOLT	4	\$3

PUMP PROTECTION

Pressure relief valve

(recommended when using a ball valve or quick action fire nozzles)
10 bar, adjustable, suits all QP fire & high pressure pumps, Inlet 1" BSP,
Outlet 1" BSP Q078908-3410 **\$290¹GST**



Aussie Pumps

All prices exclude GST, valid April 2023

For further assistance contact
Aussie Pumps, 02 8865 3500

SELF PRIMING PUMP TROUBLESHOOTING GUIDE

GET BACK IN ACTION FAST

Pump not priming? Fix it fast ...

Check out How Self Priming Pumps Work
& our **TOP 5** troubleshooting tips



Aussie Mr T Twin
Top of it's class!



PUMP PROTECTION

Pressure relief valve

(recommended when using a ball valve or quick action fire nozzles)

10 bar, adjustable, suits all Q fire & high pressure pumps,
Inlet 1" BSP, Outlet 1" BSP
Q078908-3410 **\$290^{+GST}**



Symptoms	Cause	Action
Suction failure	TOP 5 Air leak in suction line	Check couplings, associated o-rings & hose all air tight
	Pump not properly primed	Fill pump body & refit priming plug
	Speed too low or head too high	Consult pump specialist
Reduced performance	TOP 5 Blocked suction	Unblock suction strainer & suction hose
	Excessive suction lift	Check pump specification
	Air pockets or small air leaks in suction line	Locate and correct
	TOP 5 Obstruction in suction line or impeller	Remove obstruction, ensure strainer fitted
	Insufficient submergence of the suction pipe	Increase submersion of strainer
Engine overload	Excessively worn impeller or wear ring	Replace impeller and/or wear ring
	Excessive suction lift	Check pump specification
	Wrong direction of rotation	Refer to installation instructions
	Speed higher than planned	Reduce speed
	Liquid handled of greater viscosity than water	Check pump specification
Excessive noise / vibration	Too large an impeller diameter	Trim impeller
	Low voltage	Consult power supplier
	Stress in pipe connection to pump	Support piping properly
	Misalignment	Align all rotating parts
	Excessive suction lift	Consult pump specialist
	Material lodged in impeller	Dislodge obstruction
	Worn bearings	Replace bearings
	Impeller screw loose or broken	Replace
Leak from pump/ engine joint	Cavitation (improper suction design)	Check flow not impeded, i.e. suction hose too small, strainer blocked, gate valve part closed etc. Check duty point of application matches pump specs.
	Wrong direction of rotation	Refer to installation instructions
	Engine mounts deteriorated	Replace mounts, protect from fuel spills
	TOP 5 Pump has been run dry	Replace mech seal, & prime pump before starting
	Mech seal spring jammed	Clean out debris, replace mech seal
Premature engine failure	Mech seal faces worn	Replace mechanical seal
	Misalignment	Align all rotating parts
	Suction or discharge pipe not properly supported	Correct supports
	Bent shaft	Replace shaft
	Water or contaminants entering bearings	Protect pump from environment
	Lubrication to bearings not adequate	Check manual
Engine does not start	Wrong type of lubrication	Check manual
	TOP 5 Low oil shutdown is activated	Ensure pump is level, add oil to engine
	Low fuel level	Add fuel
	Battery not charged	Recharge or replace battery
	Battery leads not connected	Clean battery connections and reconnect cables
	Engine or pump seized	Replace seized part